



**Long-Term Suspensions (6 or more days)  
by Gender, Ethnicity, and Special Ed Status**



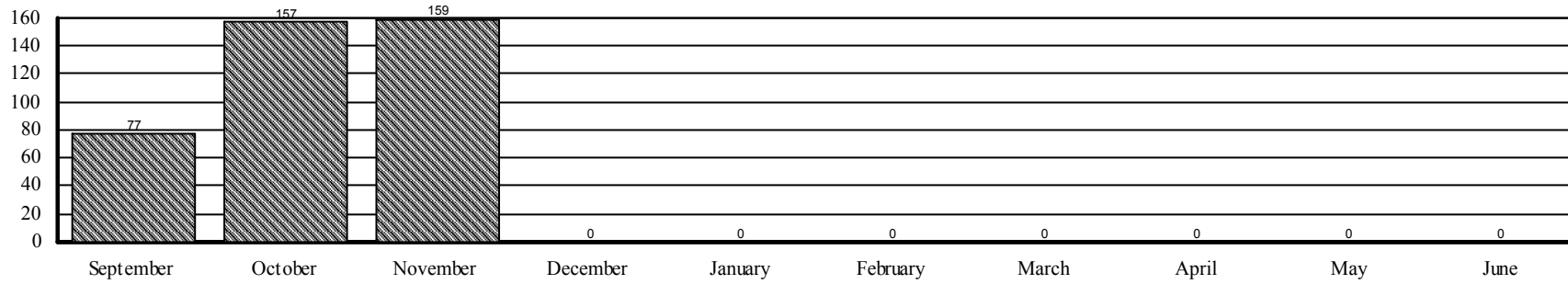
**All Schools Incidents: 09/06/2019 - 11/30/2019 Enrollments: any time during 09/06/2019 - 11/30/2019**

School Name	M	F	As	Am Ind	Black	Hisp	Multi	Wh	Sp Ed	Tot	Undup	Tot Enr	% UnSusp	YTD	PrY
0003 D'Youville Porter Campus	3	1				4			2	4	4	659	99.39%	4	5
0006 Buffalo Ele Sch of Technology	3	1			3		1		3	4	4	625	99.36%	4	2
0017 Early Childhood Center										0		401	100%		
0018 Dr. Antonia Pantoja Sch Ac Exc	3	3	2		1	3			4	6	5	515	99.03%	6	2
0019 Native American Magnet School										0		423	100%		2
0027 Hillery Park Elementary	8	1			5	3		1	8	9	9	708	98.73%	9	3
0030 Frank A Sedita Academy	1				1					1	1	858	99.88%	1	1
0031 Harriet Ross Tubman School	1							1		1	1	543	99.82%	1	6
0032 Bennett Park Montessori School	2	6	1		6		1		3	8	8	866	99.08%	8	1
0033 Bilingual Center										0		475	100%		
0037 Marva J. Daniel Futures Prep Sc	2	1			3				2	3	3	552	99.46%	3	1
0043 Lovejoy Discovery School										0		665	100%		2
0045 International School		2				2			1	2	2	1148	99.83%	2	
0048 Dr. Martin Luther King Jr.										0		444	100%		
0050 North Park Community School										0		133	100%		
0053 Community School	2	2			4				2	4	4	520	99.23%	4	5
0054 Dr G. Blackman Sch Of Excellen										0		480	100%		1
0059 Dr.C.R.Drew Sci Magnet Annex	1				1					1	1	293	99.66%	1	
0059 Dr.C.R.Drew Sci Magnet Museum	3	4			4	3			2	7	5	487	98.97%	8	5
0061 Arthur O. Eve School of Distincti	1				1				1	1	1	300	99.67%	1	1
0064 Frederick Law Olmsted North										0		574	100%		
0065 Roosevelt ECC										0		348	100%		1
0066 North Park Middle Academy	1	2			2	1			2	3	3	59	94.92%	3	3
0067 Discovery School	1	1						2	2	2	2	588	99.66%	2	1
0069 Houghton Academy	2	1			2			1	1	3	3	552	99.46%	3	2
0072 Lorraine Elementary	6	4			7	2		1	4	10	10	792	98.74%	10	8
0074 Hamlin Park Clapp Academy	1				1					1	1	505	99.80%	1	
0076 Herman Badillo Bilingual Acad	3					3			1	3	3	681	99.56%	3	4
0079 Pfc. W. J. Grabiarz Sch Of Exc	3	2	1		3	1			3	5	5	683	99.27%	5	1
0080 Highgate Heights Elementary	2	3			4	1				5	5	425	98.82%	5	2
0081 Buffalo Public School 81	3				3				2	3	3	851	99.65%	3	1
0082 Early Childhood Center	3				3				1	3	3	351	99.15%	3	1
0084 ECHC For Children										0		207	100%		
0089 Dr. Lydia T. Wright School		5			5				1	5	5	707	99.29%	5	4

School Name	M	F	As	Am Ind	Black	Hisp	Multi	Wh	Sp Ed	Tot	Undup	Tot Enr	% UnSusp	YTD	PrY
0092 B.U.I.L.D. Community School	6	1			7				3	7	7	439	98.41%	8	3
0093 Southside Elementary	3	4		1	1			5	2	7	7	1047	99.33%	7	2
0094 West Hertel Academy		2			1	1			1	2	2	829	99.76%	3	4
0095 Waterfront Elementary	8	1			5	4			7	9	6	886	99.32%	9	3
0097 Harvey Austin School	7				6		1		3	7	7	589	98.81%	7	7
0099 Stanley M. Makowski E.C.C.	1				1				1	1	1	768	99.87%	1	
0131 The Academy Schools	18	7			18	4	2	1	4	25	23	203	88.67%	25	8
0156 Frederick Law Olmsted School	1	1	1		1				1	2	2	884	99.77%	2	1
0187 Buffalo Academy for Arts	5	5			7		1	2	3	10	10	702	98.58%	10	5
0195 City Honors School at FMP	2					2				2	2	1084	99.82%	2	1
0196 Math Science Technology @ 39	5	2			6		1		1	7	6	225	97.33%	7	2
0197 Math Science Technology Prep	2	1			2			1	3	3	3	435	99.31%	3	12
0198 International Prep at Grover	14	8	1		11	5		5	9	22	21	714	97.06%	22	28
0206 South Park High School	8	6			7	5		2	4	14	13	934	98.61%	16	26
0207 Lafayette International High School	4					4			2	4	4	374	98.93%	4	2
0208 Riverside High School	9	5			5	4	1	4	4	14	14	276	94.93%	14	7
0212 Leonardo da Vinci High School	1				1				1	1	1	390	99.74%	1	6
0301 Burgard High School	15	5			16	1		3	9	20	20	507	96.06%	20	40
0302 Emerson School of Hospitality	13	17			25	4		1	15	30	28	455	93.85%	30	27
0304 Hutchinson Central Technical	10	5			10	3		2	6	15	13	1178	98.90%	15	14
0305 McKinley High School	19	8			19	5	2	1	8	27	25	1025	97.56%	27	31
0309 East Community High School	5	8			10	2		1	2	13	13	330	96.06%	13	15
0353 Newcomer Academy										0		223	100%		
0355 Buffalo School of Culinary Arts &	3				3				1	3	3	364	99.18%	3	6
0357 Pathways Academy @ 307	8	7		1	10	4			5	15	14	200	93.00%	15	7
0358 Pathways Academy @ 205										0		54	100%		1
0359 Pathways Academy @ 206										0		35	100%		
0360 Pathways Academy @ 301										0		43	100%		1
0363 Lewis J. Bennett HS of Innovative	11	8			15	4			4	19	19	325	94.15%	19	8
0366 Research Laboratory High School	2	5			5	2			1	7	7	171	95.91%	7	5
0367 Pathways Academy @ 197										0		29	100%		
0402 Occupational Training Center										0		79	100%		
0415 Middle Early College H.S.	4	4			7	1				8	7	324	97.84%	8	8
10777 CSE SPED Homebound										0			100%		

School Name	M	F	As	Am Ind	Black	Hisp	Multi	Wh	Sp Ed	Tot	Undup	Tot Enr	% UnSusp	YTD	PrY
<b>Total</b>	<b>239</b>	<b>149</b>	<b>6</b>	<b>2</b>	<b>258</b>	<b>78</b>	<b>10</b>	<b>34</b>	<b>145</b>	<b>388</b>	<b>369</b>	<b>34,539</b>	<b>98.93%</b>	<b>393</b>	<b>345</b>

**Long Term Suspensions by Month**





**Long-Term Suspensions (6 or more days)  
PK - 12 Students by Gender, Grade, and Special Ed Status**

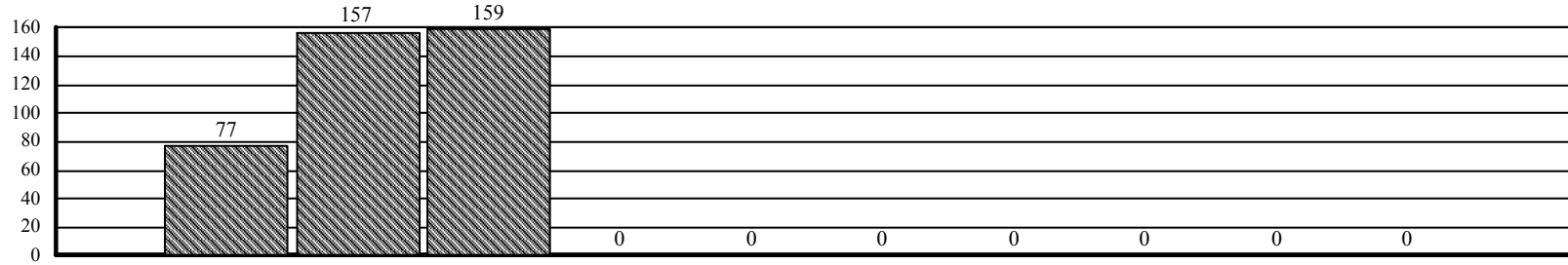
**All Schools Incidents: 09/06/2019 - 11/30/2019 Enrollments: any time during 09/06/2019 - 11/30/2019**

School Name	M	F	PK	K	1	2	3	4	5	6	7	8	9	10	11	12	SpEd	Tot	Undp	Tot Enr	% UnSusp	YTD	PrY
0003 D'Youville Porter Campus	3	1			1				1		1	1					2	4	4	659	99.39%	4	5
0006 Buffalo Ele Sch of Technology	3	1								2	2						3	4	4	625	99.36%	4	2
0017 Early Childhood Center																		0		401	100%		
0018 Dr. Antonia Pantoja Sch Ac Exc	3	3								3	1	2					4	6	5	515	99.03%	6	2
0019 Native American Magnet School																		0		423	100%		2
0027 Hillery Park Elementary	8	1			1				1		5	2					8	9	9	708	98.73%	9	3
0030 Frank A Sedita Academy	1					1												1	1	858	99.88%	1	1
0031 Harriet Ross Tubman School	1						1											1	1	543	99.82%	1	6
0032 Bennett Park Montessori School	2	6				1		2	1		4						3	8	8	866	99.08%	8	1
0033 Bilingual Center																		0		475	100%		
0037 Marva J. Daniel Futures Prep Sc	2	1							1	1		1					2	3	3	552	99.46%	3	1
0043 Lovejoy Discovery School																		0		665	100%		2
0045 International School		2									1	1					1	2	2	1148	99.83%	2	
0048 Dr. Martin Luther King Jr.																		0		444	100%		
0050 North Park Community School																		0		133	100%		
0053 Community School	2	2									2	2					2	4	4	520	99.23%	4	5
0054 Dr G. Blackman Sch Of Excellen																		0		480	100%		1
0059 Dr.C.R.Drew Sci Magnet Annex	1				1													1	1	293	99.66%	1	
0059 Dr.C.R.Drew Sci Magnet Museur	3	4								1	1	5					2	7	5	487	98.97%	8	5
0061 Arthur O. Eve School of Distincti	1						1										1	1	1	300	99.67%	1	1
0064 Frederick Law Olmsted North																		0		574	100%		
0065 Roosevelt ECC																		0		348	100%		1
0066 North Park Middle Academy	1	2									2	1					2	3	3	59	94.92%	3	3
0067 Discovery School	1	1					1				1						2	2	2	588	99.66%	2	1
0069 Houghton Academy	2	1				1	1			1							1	3	3	552	99.46%	3	2
0072 Lorraine Elementary	6	4					1	2		6	1						4	10	10	792	98.74%	10	8
0074 Hamlin Park Clapp Academy	1										1							1	1	505	99.80%	1	
0076 Herman Badillo Bilingual Acad	3								1			2					1	3	3	681	99.56%	3	4
0079 Pfc. W. J. Grabiarz Sch Of Exc	3	2							1			4					3	5	5	683	99.27%	5	1
0080 Highgate Heights Elementary	2	3				1						4						5	5	425	98.82%	5	2
0081 Buffalo Public School 81	3				1					1		1					2	3	3	851	99.65%	3	1
0082 Early Childhood Center	3					1		2									1	3	3	351	99.15%	3	1
0084 ECHC For Children																		0		207	100%		
0089 Dr. Lydia T. Wright School		5					1		1	2	1						1	5	5	707	99.29%	5	4

School Name	M	F	PK	K	1	2	3	4	5	6	7	8	9	10	11	12	SpEd	Tot	Undp	Tot Enr	% UnSusp	YTD	PrY
0092 B.U.I.L.D. Community School	6	1						1	2	2		2					3	7	7	439	98.41%	8	3
0093 Southside Elementary	3	4							2	1	3	1					2	7	7	1047	99.33%	7	2
0094 West Hertel Academy		2										2					1	2	2	829	99.76%	3	4
0095 Waterfront Elementary	8	1		1	1	1						6					7	9	6	886	99.32%	9	3
0097 Harvey Austin School	7							1			4	2					3	7	7	589	98.81%	7	7
0099 Stanley M. Makowski E.C.C.	1							1									1	1	1	768	99.87%	1	
0131 The Academy Schools	18	7									2	5	1	6	7	4	4	25	23	203	88.67%	25	8
0156 Frederick Law Olmsted School	1	1									1			1			1	2	2	884	99.77%	2	1
0187 Buffalo Academy for Arts	5	5										2			5	3	3	10	10	702	98.58%	10	5
0195 City Honors School at FMP	2													1		1		2	2	1084	99.82%	2	1
0196 Math Science Technology @ 39	5	2								1	2	4					1	7	6	225	97.33%	7	2
0197 Math Science Technology Prep	2	1											1	1		1	3	3	3	435	99.31%	3	12
0198 International Prep at Grover	14	8										3	5	9	4	1	9	22	21	714	97.06%	22	28
0206 South Park High School	8	6											10		2	2	4	14	13	934	98.61%	16	26
0207 Lafayette International High School	4												1	1	2		2	4	4	374	98.93%	4	2
0208 Riverside High School	9	5											2	5	7		4	14	14	276	94.93%	14	7
0212 Leonardo da Vinci High School	1												1				1	1	1	390	99.74%	1	6
0301 Burgard High School	15	5											4	9	2	5	9	20	20	507	96.06%	20	40
0302 Emerson School of Hospitality	13	17											9	7	8	6	15	30	28	455	93.85%	30	27
0304 Hutchinson Central Technical	10	5											2	5	5	3	6	15	13	1178	98.90%	15	14
0305 McKinley High School	19	8											8	11	7	1	8	27	25	1025	97.56%	27	31
0309 East Community High School	5	8											6	6	1		2	13	13	330	96.06%	13	15
0353 Newcomer Academy																		0		223	100%		
0355 Buffalo School of Culinary Arts &	3													1	1	1	1	3	3	364	99.18%	3	6
0357 Pathways Academy @ 307	8	7											8	4	2		5	15	14	200	93.00%	15	7
0358 Pathways Academy @ 205																		0		54	100%		1
0359 Pathways Academy @ 206																		0		35	100%		
0360 Pathways Academy @ 301																		0		43	100%		1
0363 Lewis J. Bennett HS of Innovative	11	8											7	5	1	6	4	19	19	325	94.15%	19	8
0366 Research Laboratory High School	2	5											2	1	2	2	1	7	7	171	95.91%	7	5
0367 Pathways Academy @ 197																		0		29	100%		
0402 Occupational Training Center																		0		79	100%		
0415 Middle Early College H.S.	4	4											1	4	1	2		8	7	324	97.84%	8	8
10777 CSE SPED Homebound																		0			100%		

School Name	M	F	PK	K	1	2	3	4	5	6	7	8	9	10	11	12	SpEd	Tot	Undp	Tot Enr	% UnSusp	YTD	PrY
<b>Total</b>	<b>239</b>	<b>149</b>		2	4	6	6	9	11	21	35	53	68	77	57	38	<b>145</b>	<b>388</b>	<b>369</b>	<b>34,539</b>	<b>98.93%</b>	<b>393</b>	<b>345</b>

Long-Term Suspensions by Month





**Short-Term Suspensions (1-5 days)  
by Gender, Ethnicity, and Special Ed Status**

**All Schools Incidents: 09/06/2019 - 11/30/2019 Enrollments: any time during 09/06/2019 - 11/30/2019**

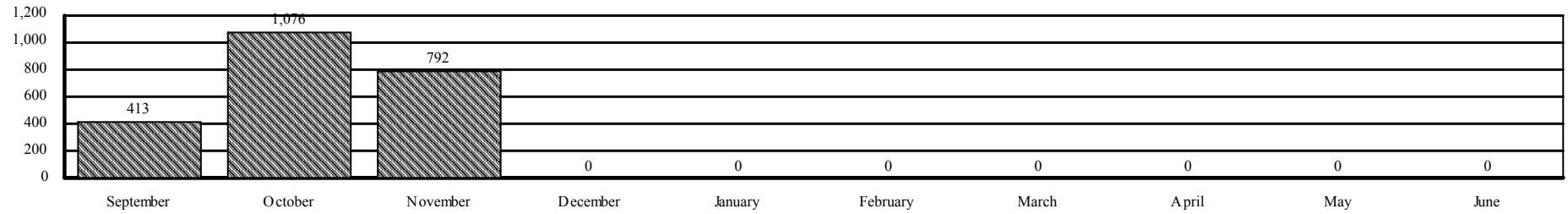
School Name	M	F	As	Am Ind	Black	Hisp	Multi	Wh	Sp Ed	Tot	Undup	Tot Enr	UnSusp	Number of Days					YTD	PrY
														1	2	3	4	5		
0003 D'Youville Porter Campus	18	10			3	24		1	8	28	23	659	96.51%		7	14		7	28	33
0006 Buffalo Ele Sch of Technology	15	4			12	4	2	1	9	19	15	625	97.60%	1		5	2	11	19	24
0017 Early Childhood Center	1				1					1	1	401	99.75%		1				1	
0018 Dr. Antonia Pantoja Sch Ac Exc	24	9			24	7		2	28	33	20	515	96.12%	18	5	2	4	4	33	26
0019 Native American Magnet School	5	3			7		1		4	8	7	423	98.35%				1	7	8	9
0027 Hillery Park Elementary	43	12			39	6	2	8	23	55	37	708	94.77%	11	19	13	1	10	55	24
0030 Frank A Sedita Academy	32	21	1		4	47		1	16	53	38	858	95.57%	9	17	14	1	12	53	44
0031 Harriet Ross Tubman School	38	23			48	5		8	13	61	41	543	92.45%	6	14	23	2	15	61	38
0032 Bennett Park Montessori School	20	16	2		29	1	1	3	22	36	29	866	96.65%	4	21	4	1	7	36	30
0033 Bilingual Center	9	7			2	14			5	16	12	475	97.47%	1	4	10		1	16	7
0037 Marva J. Daniel Futures Prep Sch	11	8			15	2		2	13	19	16	552	97.10%		4	6		9	19	7
0043 Lovejoy Discovery School	36	12			24	9	5	10	26	48	34	665	94.89%	2	11	19		16	48	30
0045 International School	33	24	2		36	8		11	44	57	27	1148	97.65%	28	12	8		8	57	29
0048 Dr. Martin Luther King Jr.	10	1			3	7		1	5	11	9	444	97.97%	3	1	6	1		11	3
0050 North Park Community School	1					1			1	1	1	133	99.25%					1	1	
0053 Community School	12	6			14	2	1	1	8	18	17	520	96.73%	2	2	5	1	5	18	22
0054 Dr G. Blackman Sch Of Excellence	7	3			10				9	10	6	480	98.75%		1	5	1	3	10	22
0059 Dr.C.R.Drew Sci Magnet Annex	24	1			21	4			23	25	11	293	96.25%	1	4	5	1	14	25	15
0059 Dr.C.R.Drew Sci Magnet Museum	57	25	4		71		4	3	28	82	66	487	86.45%	3	3	28	3	44	82	100
0061 Arthur O. Eve School of Distinction	5				5				2	5	4	300	98.67%		1				5	17
0064 Frederick Law Olmsted North	4					3		1	4	4	2	574	99.65%		2	2			4	
0065 Roosevelt ECC	16	1			6	8		3	1	17	9	348	97.41%	1	1	8		6	17	6
0066 North Park Middle Academy	14	2			15		1		11	16	10	59	83.05%	2	4	6	1	3	16	38
0067 Discovery School	16	8		1	7	1	2	13	15	24	18	588	96.94%	1	1	14	1	7	24	28
0069 Houghton Academy	27	5			11	13		8	27	32	18	552	96.74%	8	9	5	2	8	32	17
0072 Lorraine Elementary	37	17			30	6	5	13	24	54	39	792	95.08%	5	16	20	2	12	54	61
0074 Hamlin Park Clapp Academy	1	5			6				2	6	6	505	98.81%			3	2	1	6	2
0076 Herman Badillo Bilingual Acad	23	20			8	33		2	19	43	24	681	96.48%	3	5	13	3	16	43	38
0079 Pfc. W. J. Grabiarz Sch Of Exc	22	15		2	24	9	2		25	37	23	683	96.63%	1	17	13	4	2	37	24
0080 Highgate Heights Elementary	18	3			20	1			4	21	16	425	96.24%	5	5	7	1	3	21	31
0081 Buffalo Public School 81	41	6			31	8	2	6	17	47	31	851	96.36%	11	21	8	3	4	47	41
0082 Early Childhood Center	24	1	1		21			3	11	25	16	351	95.44%	4	3	9	4	5	25	34
0084 ECHC For Children										0		207	100%							
0089 Dr. Lydia T. Wright School	103	52			149	2	1	3	23	155	97	707	86.28%	3	6	79	2	65	155	83

School Name	M	F	As	Am Ind	Black	Hisp	Multi	Wh	Sp Ed	Tot	Undup	Tot Enr	UnSusp	Number of Days					YTD	PrY
														1	2	3	4	5		
0092 B.U.I.L.D. Community School	13	15			20	7		1	9	28	25	439	94.31%	7	4	8	2	7	28	40
0093 Southside Elementary	42	24			39	3	5	19	37	66	47	1047	95.51%		18	19	3	26	66	119
0094 West Hertel Academy										0		829	100%							26
0095 Waterfront Elementary	68	19			44	23	3	17	54	87	57	886	93.57%	4	17	26	5	36	87	73
0097 Harvey Austin School	30	10			32	4	2	2	16	40	34	589	94.23%	1		29		10	40	57
0099 Stanley M. Makowski E.C.C.	15	8			15	6	1	1	18	23	18	768	97.66%	1	15	3	1	3	23	7
0131 The Academy Schools	69	28			63	17	6	11	44	97	53	203	73.89%	1	5	12	1	78	97	95
0156 Frederick Law Olmsted School	5		2					3	3	5	4	884	99.55%	2	2			1	5	10
0187 Buffalo Academy for Arts	5	16			18	1	1	1	7	21	20	702	97.15%			10	2	8	21	31
0195 City Honors School at FMP										0		1084	100%							3
0196 Math Science Technology @ 39	37	8	2		32	6	5		26	45	38	225	83.11%	9	15	17		5	45	84
0197 Math Science Technology Prep	20	17			32	2		3	20	37	25	435	94.25%	13	5	8	1	10	37	64
0198 International Prep at Grover	60	29	4		56	18	3	8	47	89	60	714	91.60%	7	19	29	1	32	89	71
0206 South Park High School	20	15			22	6	1	6	8	35	32	934	96.57%		1	4	2	27	35	107
0207 Lafayette International High Schoc	10		3		3	1		3	1	10	10	374	97.33%		2	1		7	10	7
0208 Riverside High School	19	16			20	13		2	14	35	27	276	90.22%		1	21		13	35	48
0212 Leonardo da Vinci High School	12	11	2	1	8	10		2	9	23	20	390	94.87%	2	10	7	1	3	23	27
0301 Burgard High School	97	36		2	99	20	1	11	51	133	105	507	79.29%		4	89	2	38	133	159
0302 Emerson School of Hospitality	41	80			93	13	4	11	34	121	86	455	81.10%		11	44	11	55	121	112
0304 Hutchinson Central Technical	21	9			15	9	1	5	13	30	26	1178	97.79%	10	7	4		9	30	46
0305 McKinley High School	11	17	1		16	11			4	28	23	1025	97.76%	1	2	5		18	28	54
0309 East Community High School	62	53		5	78	20	2	10	27	115	71	330	78.48%		64	17	5	28	115	142
0353 Newcomer Academy										0		223	100%							1
0355 Buffalo School of Culinary Arts & I	18	9			18	5		4	14	27	24	364	93.41%		5	12	1	9	27	36
0357 Pathways Academy @ 307	29	14			23	14	1	5	20	43	36	200	82.00%	2	11	10	10	10	43	39
0358 Pathways Academy @ 205										0		54	100%							1
0359 Pathways Academy @ 206										0		35	100%							2
0360 Pathways Academy @ 301										0		43	100%							1
0363 Lewis J. Bennett HS of Innovative	33	13			34	6	1	5	23	46	39	325	88.00%	18	10	2		16	46	21
0366 Research Laboratory High School	3	6			5	1	1	2	2	9	8	171	95.32%		4	2		3	9	12
0367 Pathways Academy @ 197										0		29	100%							1
0402 Occupational Training Center	4							4	4	4	1	79	98.73%	1	2			1	4	
0415 Middle Early College H.S.	4	13			13	2		2	4	17	13	324	95.99%	1	1	9		6	17	6
10777 CSE SPED Homebound										0			100%							



School Name	M	F	As	Am Ind	Black	Hisp	Multi	Wh	Sp Ed	Tot	Undup	Tot Enr	UnSusp	Number of Days					YTD	PrY
														1	2	3	4	5		
<b>Total</b>	<b>1495</b>	<b>786</b>	<b>24</b>	<b>11</b>	<b>1494</b>	<b>443</b>	<b>67</b>	<b>242</b>	<b>979</b>	<b>2281</b>	<b>1625</b>	<b>34,539</b>	<b>95.30%</b>	<b>213</b>	<b>452</b>	<b>742</b>	<b>92</b>	<b>765</b>	<b>2281</b>	<b>2385</b>

Short Term Suspensions by Month





**Short-Term Suspensions (5 or less days)  
PK - 12 Students by Gender, Grade, and Special Ed Status**



All Schools Incidents: 09/06/2019 - 11/30/2019 Enrollments: any time during 09/06/2019 - 11/30/2019

School Name	M	F	PK	K	1	2	3	4	5	6	7	8	9	10	11	12	SpEd	Tot	Undp	Tot Enr	% UnSusp	YTD	PrY
0003 D'Youville Porter Campus	18	10			1		1	6	7	3	9	1					8	28	23	659	96.51%	28	33
0006 Buffalo Ele Sch of Technology	15	4		2						6	11						9	19	15	625	97.60%	19	24
0017 Early Childhood Center	1				1													1	1	401	99.75%	1	
0018 Dr. Antonia Pantoja Sch Ac Exc	24	9			5					4	19	5					28	33	20	515	96.12%	33	26
0019 Native American Magnet School	5	3				1			2	1	3	1					4	8	7	423	98.35%	8	9
0027 Hillery Park Elementary	43	12	2		3	5	3	8	4	1	24	5					23	55	37	708	94.77%	55	24
0030 Frank A Sedita Academy	32	21	2	4		5	2	12	9	4	8	7					16	53	38	858	95.57%	53	44
0031 Harriet Ross Tubman School	38	23	3	4		4	12	11	8	13	1	5					13	61	41	543	92.45%	61	38
0032 Bennett Park Montessori School	20	16			3	1	6	8	4	4	8	2					22	36	29	866	96.65%	36	30
0033 Bilingual Center	9	7				1		1			2	12					5	16	12	475	97.47%	16	7
0037 Marva J. Daniel Futures Prep Sc	11	8			4			1	5	5		4					13	19	16	552	97.10%	19	7
0043 Lovejoy Discovery School	36	12			2	3	8		4	14	13	4					26	48	34	665	94.89%	48	30
0045 International School	33	24			16			22	7	5	3	4					44	57	27	1148	97.65%	57	29
0048 Dr. Martin Luther King Jr.	10	1	5	2	3	1											5	11	9	444	97.97%	11	3
0050 North Park Community School	1			1													1	1	1	133	99.25%	1	
0053 Community School	12	6		1				1	3	3	3	7					8	18	17	520	96.73%	18	22
0054 Dr G. Blackman Sch Of Excellen	7	3				5	4	1									9	10	6	480	98.75%	10	22
0059 Dr.C.R.Drew Sci Magnet Annex	24	1		8	13	4											23	25	11	293	96.25%	25	15
0059 Dr.C.R.Drew Sci Magnet Museu	57	25					2	5	11	15	32	17					28	82	66	487	86.45%	82	100
0061 Arthur O. Eve School of Distincti	5				1		4										2	5	4	300	98.67%	5	17
0064 Frederick Law Olmsted North	4						4										4	4	2	574	99.65%	4	
0065 Roosevelt ECC	16	1		9	6	2											1	17	9	348	97.41%	17	6
0066 North Park Middle Academy	14	2									13	3					11	16	10	59	83.05%	16	38
0067 Discovery School	16	8		1		6	3		1	1	6	6					15	24	18	588	96.94%	24	28
0069 Houghton Academy	27	5					1	14	1	10	1	5					27	32	18	552	96.74%	32	17
0072 Lorraine Elementary	37	17				1	4	6	14	14	9	6					24	54	39	792	95.08%	54	61
0074 Hamlin Park Clapp Academy	1	5						1			3	2					2	6	6	505	98.81%	6	2
0076 Herman Badillo Bilingual Acad	23	20		2			10	5	4	4	7	11					19	43	24	681	96.48%	43	38
0079 Pfc. W. J. Grabiarz Sch Of Exc	22	15			1		1	1		17	7	10					25	37	23	683	96.63%	37	24
0080 Highgate Heights Elementary	18	3			2	2			1	9		7					4	21	16	425	96.24%	21	31
0081 Buffalo Public School 81	41	6			8		2	3	9	9	6	10					17	47	31	851	96.36%	47	41
0082 Early Childhood Center	24	1	1	1	3	2	2	16									11	25	16	351	95.44%	25	34
0084 ECHC For Children																		0		207	100%		
0089 Dr. Lydia T. Wright School	103	52	2	2	7	6	21	16	20	21	43	17					23	155	97	707	86.28%	155	83
0092 B.U.I.L.D. Community School	13	15			1		2	1	10	5	4	5					9	28	25	439	94.31%	28	40

School Name	M	F	PK	K	1	2	3	4	5	6	7	8	9	10	11	12	SpEd	Tot	Undp	Tot Enr	% UnSusp	YTD	PrY
0093 Southside Elementary	42	24	3		6			8	22	9	8	10					37	66	47	1047	95.51%	66	119
0094 West Hertel Academy																		0		829	100%		26
0095 Waterfront Elementary	68	19		6	6	14	4	7	4	4	16	26					54	87	57	886	93.57%	87	73
0097 Harvey Austin School	30	10			2	1		5	8	5	15	4					16	40	34	589	94.23%	40	57
0099 Stanley M. Makowski E.C.C.	15	8				3	8	12									18	23	18	768	97.66%	23	7
0131 The Academy Schools	69	28									2	11	17	27	29	11	44	97	53	203	73.89%	97	95
0156 Frederick Law Olmsted School	5										2		1		1	1	3	5	4	884	99.55%	5	10
0187 Buffalo Academy for Arts	5	16										2	3	5	7	4	7	21	20	702	97.15%	21	31
0195 City Honors School at FMP																		0		1084	100%		3
0196 Math Science Technology @ 39	37	8							8	5	20	12					26	45	38	225	83.11%	45	84
0197 Math Science Technology Prep	20	17											5	17	12	3	20	37	25	435	94.25%	37	64
0198 International Prep at Grover	60	29										9	26	26	18	10	47	89	60	714	91.60%	89	71
0206 South Park High School	20	15											19	10	4	2	8	35	32	934	96.57%	35	107
0207 Lafayette International High School	10												2	2	3	3	1	10	10	374	97.33%	10	7
0208 Riverside High School	19	16											7	18	10		14	35	27	276	90.22%	35	48
0212 Leonardo da Vinci High School	12	11											7	3	8	5	9	23	20	390	94.87%	23	27
0301 Burgard High School	97	36											48	41	24	20	51	133	105	507	79.29%	133	159
0302 Emerson School of Hospitality	41	80											46	44	16	15	34	121	86	455	81.10%	121	112
0304 Hutchinson Central Technical	21	9											6	15	4	5	13	30	26	1178	97.79%	30	46
0305 McKinley High School	11	17											3	15	6	4	4	28	23	1025	97.76%	28	54
0309 East Community High School	62	53											69	15	21	10	27	115	71	330	78.48%	115	142
0353 Newcomer Academy																		0		223	100%		1
0355 Buffalo School of Culinary Arts &	18	9											11	9	7		14	27	24	364	93.41%	27	36
0357 Pathways Academy @ 307	29	14											9	17	12	5	20	43	36	200	82.00%	43	39
0358 Pathways Academy @ 205																		0		54	100%		1
0359 Pathways Academy @ 206																		0		35	100%		2
0360 Pathways Academy @ 301																		0		43	100%		1
0363 Lewis J. Bennett HS of Innovative	33	13											20	15	8	3	23	46	39	325	88.00%	46	21
0366 Research Laboratory High School	3	6											7	1	1		2	9	8	171	95.32%	9	12
0367 Pathways Academy @ 197																		0		29	100%		1
0402 Occupational Training Center	4																4	4	1	79	98.73%	4	
0415 Middle Early College H.S.	4	13											8	5	3	1	4	17	13	324	95.99%	17	6
10777 CSE SPED Homebound																		0			100%		

School Name	M	F	PK	K	1	2	3	4	5	6	7	8	9	10	11	12	SpEd	Tot	Undp	Tot Enr	% UnSusp	YTD	PrY
<b>Total</b>	<b>1495</b>	<b>786</b>	18	43	94	67	104	171	166	191	298	230	314	285	194	102	<b>979</b>	<b>2281</b>	<b>1625</b>	<b>34,539</b>	<b>95.30%</b>	<b>2281</b>	<b>2385</b>

Short-Term Suspensions by Month

