



**Long-Term Suspensions (6 or more days)  
by Gender, Ethnicity, and Special Ed Status**



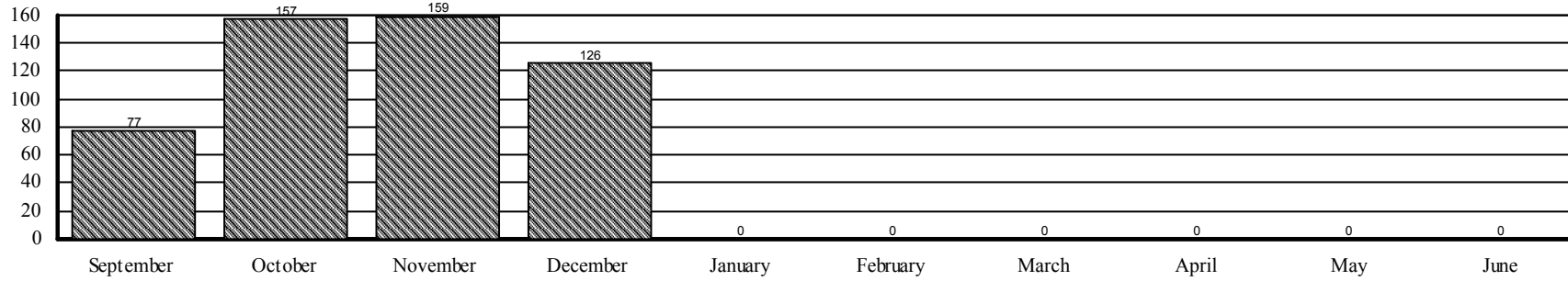
**All Schools Incidents: 09/06/2019 - 12/31/2019 Enrollments: any time during 09/06/2019 - 12/31/2019**

School Name	M	F	As	Am Ind	Black	Hisp	Multi	Wh	Sp Ed	Tot	Undup	Tot Enr	% UnSusp	YTD	PrY
0003 D'Youville Porter Campus	6	1			1	6			3	7	7	667	98.95%	7	7
0006 Buffalo Ele Sch of Technology	3	2			4		1		3	5	5	632	99.21%	5	2
0017 Early Childhood Center										0		403	100%		
0018 Dr. Antonia Pantoja Sch Ac Exc	3	3	2		1	3			4	6	5	515	99.03%	6	2
0019 Native American Magnet School										0		427	100%		5
0027 Hillery Park Elementary	11	1			8	3		1	8	12	12	715	98.32%	12	3
0030 Frank A Sedita Academy	1				1					1	1	861	99.88%	1	3
0031 Harriet Ross Tubman School	4	1			1	1	1	2		5	5	543	99.08%	5	9
0032 Bennett Park Montessori School	2	7	2		6		1		3	9	8	871	99.08%	9	1
0033 Bilingual Center										0		474	100%		
0037 Marva J. Daniel Futures Prep Sc	2	1			3				2	3	3	553	99.46%	3	1
0043 Lovejoy Discovery School										0		669	100%		3
0045 International School	2	3			2	3			2	5	5	1149	99.56%	5	
0048 Dr. Martin Luther King Jr.										0		448	100%		
0050 North Park Community School										0		136	100%		
0053 Community School	2	4			6				2	6	5	524	99.05%	6	6
0054 Dr G. Blackman Sch Of Excellen										0		488	100%		3
0059 Dr.C.R.Drew Sci Magnet Annex	1				1					1	1	294	99.66%	1	1
0059 Dr.C.R.Drew Sci Magnet Museum	4	6			7	3			3	10	8	489	98.36%	11	6
0061 Arthur O. Eve School of Distincti	1				1				1	1	1	304	99.67%	1	2
0064 Frederick Law Olmsted North										0		579	100%		
0065 Roosevelt ECC										0		349	100%		1
0066 North Park Middle Academy	2	2			3	1			3	4	4	59	93.22%	4	3
0067 Discovery School	2	1			1			2	3	3	3	592	99.49%	3	2
0069 Houghton Academy	3	1			3			1	2	4	4	556	99.28%	4	2
0072 Lorraine Elementary	10	4			11	2		1	7	14	14	803	98.26%	14	12
0074 Hamlin Park Clapp Academy	1				1					1	1	507	99.80%	1	
0076 Herman Badillo Bilingual Acad	3					3			1	3	3	686	99.56%	3	5
0079 Pfc. W. J. Grabiarz Sch Of Exc	3	4	1		3	2	1		3	7	7	683	98.98%	7	2
0080 Highgate Heights Elementary	2	3			4	1				5	5	433	98.85%	5	2
0081 Buffalo Public School 81	3				3				2	3	3	856	99.65%	3	1
0082 Early Childhood Center	3				3				1	3	3	354	99.15%	3	1
0084 ECHC For Children										0		209	100%		
0089 Dr. Lydia T. Wright School	4	5			9				1	9	9	716	98.74%	9	5

School Name	M	F	As	Am Ind	Black	Hisp	Multi	Wh	Sp Ed	Tot	Undup	Tot Enr	% UnSusp	YTD	PrY
0092 B.U.I.L.D. Community School	7	3			9	1			3	10	10	438	97.72%	11	3
0093 Southside Elementary	5	6		1	3	1		6	6	11	11	1053	98.96%	11	12
0094 West Hertel Academy	1	3			3	1			3	4	4	839	99.52%	5	6
0095 Waterfront Elementary	9	2			5	5		1	9	11	8	896	99.11%	11	4
0097 Harvey Austin School	10	1			10		1		5	11	8	595	98.66%	11	10
0099 Stanley M. Makowski E.C.C.	2				1	1			2	2	2	776	99.74%	2	
0131 The Academy Schools	20	10			20	4	2	4	5	30	28	212	86.79%	30	12
0156 Frederick Law Olmsted School	1	2	1		2				2	3	3	885	99.66%	3	3
0187 Buffalo Academy for Arts	5	10			11	1	1	2	3	15	15	704	97.87%	15	7
0195 City Honors School at FMP	2					2				2	2	1084	99.82%	2	1
0196 Math Science Technology @ 39	7	2			8		1		3	9	8	225	96.44%	9	3
0197 Math Science Technology Prep	2	1			2			1	3	3	3	435	99.31%	3	14
0198 International Prep at Grover	15	9	1		12	6		5	11	24	23	717	96.79%	24	33
0206 South Park High School	10	9			10	6		3	7	19	17	938	98.19%	21	33
0207 Lafayette International High School	7		1			4		2	2	7	7	404	98.27%	7	2
0208 Riverside High School	11	5			6	5	1	4	6	16	16	278	94.24%	16	9
0212 Leonardo da Vinci High School	1	1			2				2	2	2	392	99.49%	2	6
0301 Burgard High School	18	7		1	20	1		3	10	25	25	512	95.12%	25	47
0302 Emerson School of Hospitality	17	20			31	5		1	18	37	32	455	92.97%	37	31
0304 Hutchinson Central Technical	11	7			11	3		4	7	18	16	1177	98.64%	18	17
0305 McKinley High School	27	17	1		34	6	2	1	9	44	40	1026	96.10%	44	51
0309 East Community High School	10	13			19	2		2	3	23	20	331	93.96%	23	20
0353 Newcomer Academy	1		1							1	1	226	99.56%	1	
0355 Buffalo School of Culinary Arts &	3	1			4				1	4	4	364	98.90%	4	7
0357 Pathways Academy @ 307	10	8		1	11	5		1	7	18	17	207	91.79%	18	11
0358 Pathways Academy @ 205										0		58	100%		1
0359 Pathways Academy @ 206										0		40	100%		
0360 Pathways Academy @ 301										0		44	100%		1
0363 Lewis J. Bennett HS of Innovative	11	9			16	4			4	20	20	327	93.88%	20	12
0366 Research Laboratory High School	4	5			7	2			2	9	9	171	94.74%	9	6
0367 Pathways Academy @ 197										0		32	100%		
0402 Occupational Training Center										0		80	100%		
0415 Middle Early College H.S.	4	5			8	1				9	8	325	97.54%	9	11
10777 CSE SPED Homebound										0			100%		

School Name	M	F	As	Am Ind	Black	Hisp	Multi	Wh	Sp Ed	Tot	Undup	Tot Enr	% UnSusp	YTD	PrY
<b>Total</b>	<b>309</b>	<b>205</b>	<b>10</b>	<b>3</b>	<b>348</b>	<b>94</b>	<b>12</b>	<b>47</b>	<b>187</b>	<b>514</b>	<b>481</b>	<b>34,790</b>	<b>98.62%</b>	<b>519</b>	<b>463</b>

**Long Term Suspensions by Month**





**Long-Term Suspensions (6 or more days)  
PK - 12 Students by Gender, Grade, and Special Ed Status**

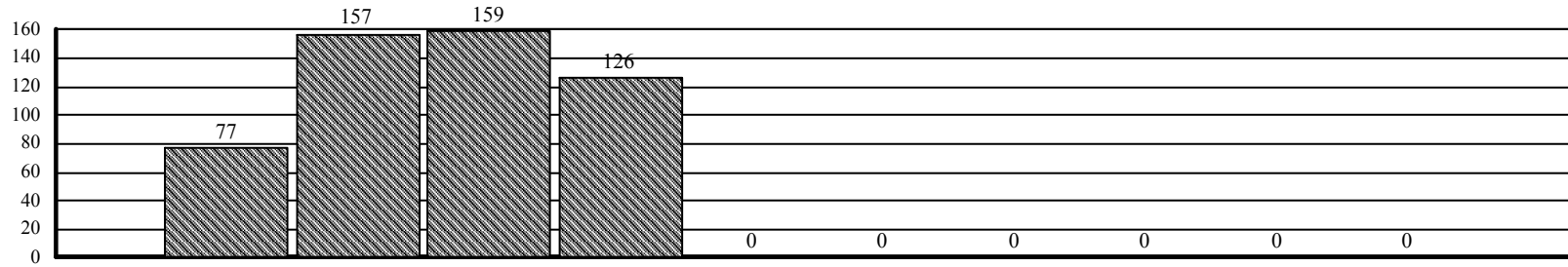
**All Schools Incidents: 09/06/2019 - 12/31/2019 Enrollments: any time during 09/06/2019 - 12/31/2019**

School Name	M	F	PK	K	1	2	3	4	5	6	7	8	9	10	11	12	SpEd	Tot	Undp	Tot Enr	% UnSusp	YTD	PrY
0003 D'Youville Porter Campus	6	1			1				2		2	2					3	7	7	667	98.95%	7	7
0006 Buffalo Ele Sch of Technology	3	2								2	3						3	5	5	632	99.21%	5	2
0017 Early Childhood Center																		0		403	100%		
0018 Dr. Antonia Pantoja Sch Ac Exc	3	3								3	1	2					4	6	5	515	99.03%	6	2
0019 Native American Magnet School																		0		427	100%		5
0027 Hillery Park Elementary	11	1			1			1	1		7	2					8	12	12	715	98.32%	12	3
0030 Frank A Sedita Academy	1					1												1	1	861	99.88%	1	3
0031 Harriet Ross Tubman School	4	1					1			4								5	5	543	99.08%	5	9
0032 Bennett Park Montessori School	2	7				1		2	1		5						3	9	8	871	99.08%	9	1
0033 Bilingual Center																		0		474	100%		
0037 Marva J. Daniel Futures Prep Sc	2	1							1	1		1					2	3	3	553	99.46%	3	1
0043 Lovejoy Discovery School																		0		669	100%		3
0045 International School	2	3				1					3	1					2	5	5	1149	99.56%	5	
0048 Dr. Martin Luther King Jr.																		0		448	100%		
0050 North Park Community School																		0		136	100%		
0053 Community School	2	4						1			2	3					2	6	5	524	99.05%	6	6
0054 Dr G. Blackman Sch Of Excellen																		0		488	100%		3
0059 Dr.C.R.Drew Sci Magnet Annex	1				1													1	1	294	99.66%	1	1
0059 Dr.C.R.Drew Sci Magnet Museur	4	6								2	2	6					3	10	8	489	98.36%	11	6
0061 Arthur O. Eve School of Distincti	1						1										1	1	1	304	99.67%	1	2
0064 Frederick Law Olmsted North																		0		579	100%		
0065 Roosevelt ECC																		0		349	100%		1
0066 North Park Middle Academy	2	2									3	1					3	4	4	59	93.22%	4	3
0067 Discovery School	2	1					1		1		1						3	3	3	592	99.49%	3	2
0069 Houghton Academy	3	1				1	1	1		1							2	4	4	556	99.28%	4	2
0072 Lorraine Elementary	10	4					2	2		6	1	3					7	14	14	803	98.26%	14	12
0074 Hamlin Park Clapp Academy	1										1							1	1	507	99.80%	1	
0076 Herman Badillo Bilingual Acad	3								1			2					1	3	3	686	99.56%	3	5
0079 Pfc. W. J. Grabiarz Sch Of Exc	3	4							1	2		4					3	7	7	683	98.98%	7	2
0080 Highgate Heights Elementary	2	3				1						4						5	5	433	98.85%	5	2
0081 Buffalo Public School 81	3				1					1		1					2	3	3	856	99.65%	3	1
0082 Early Childhood Center	3					1		2									1	3	3	354	99.15%	3	1
0084 ECHC For Children																		0		209	100%		
0089 Dr. Lydia T. Wright School	4	5			1	1	2		2	2	1						1	9	9	716	98.74%	9	5

School Name	M	F	PK	K	1	2	3	4	5	6	7	8	9	10	11	12	SpEd	Tot	Undp	Tot Enr	% UnSusp	YTD	PrY				
0092 B.U.I.L.D. Community School	7	3				1		1	4	2		2					3	10	10	438	97.72%	11	3				
0093 Southside Elementary	5	6							4	2	3	2					6	11	11	1053	98.96%	11	12				
0094 West Hertel Academy	1	3							1			3					3	4	4	839	99.52%	5	6				
0095 Waterfront Elementary	9	2		1	1	1						8					9	11	8	896	99.11%	11	4				
0097 Harvey Austin School	10	1						2			6	3					5	11	8	595	98.66%	11	10				
0099 Stanley M. Makowski E.C.C.	2							2									2	2	2	776	99.74%	2					
0131 The Academy Schools	20	10									2	6	1	7	8	6	5	30	28	212	86.79%	30	12				
0156 Frederick Law Olmsted School	1	2									1			1	1		2	3	3	885	99.66%	3	3				
0187 Buffalo Academy for Arts	5	10									1	3	2		6	3	3	15	15	704	97.87%	15	7				
0195 City Honors School at FMP	2													1		1		2	2	1084	99.82%	2	1				
0196 Math Science Technology @ 39	7	2								1	3	5					3	9	8	225	96.44%	9	3				
0197 Math Science Technology Prep	2	1											1	1		1	3	3	3	435	99.31%	3	14				
0198 International Prep at Grover	15	9										3	5	10	5	1	11	24	23	717	96.79%	24	33				
0206 South Park High School	10	9															13		4	2	7	19	17	938	98.19%	21	33
0207 Lafayette International High School	7													1	2	4		2	7	7	404	98.27%	7	2			
0208 Riverside High School	11	5												2	7	7		6	16	16	278	94.24%	16	9			
0212 Leonardo da Vinci High School	1	1												1		1		2	2	2	392	99.49%	2	6			
0301 Burgard High School	18	7												5	11	3	6	10	25	25	512	95.12%	25	47			
0302 Emerson School of Hospitality	17	20												11	11	8	7	18	37	32	455	92.97%	37	31			
0304 Hutchinson Central Technical	11	7												3	5	7	3	7	18	16	1177	98.64%	18	17			
0305 McKinley High School	27	17												17	14	11	2	9	44	40	1026	96.10%	44	51			
0309 East Community High School	10	13												12	8	1	2	3	23	20	331	93.96%	23	20			
0353 Newcomer Academy	1													1					1	1	226	99.56%	1				
0355 Buffalo School of Culinary Arts &	3	1												1	1	1	1	1	4	4	364	98.90%	4	7			
0357 Pathways Academy @ 307	10	8												8	6	2	1	7	18	17	207	91.79%	18	11			
0358 Pathways Academy @ 205																			0		58	100%		1			
0359 Pathways Academy @ 206																			0		40	100%					
0360 Pathways Academy @ 301																			0		44	100%		1			
0363 Lewis J. Bennett HS of Innovative	11	9												7	6	1	6	4	20	20	327	93.88%	20	12			
0366 Research Laboratory High School	4	5												3	2	2	2	2	9	9	171	94.74%	9	6			
0367 Pathways Academy @ 197																			0		32	100%					
0402 Occupational Training Center																			0		80	100%					
0415 Middle Early College H.S.	4	5												2	4	1	2		9	8	325	97.54%	9	11			
10777 CSE SPED Homebound																			0			100%					

School Name	M	F	PK	K	1	2	3	4	5	6	7	8	9	10	11	12	SpEd	Tot	Undp	Tot Enr	% UnSusp	YTD	PrY
<b>Total</b>	<b>309</b>	<b>205</b>		2	5	9	8	14	19	29	48	67	96	97	73	46	<b>187</b>	<b>514</b>	<b>481</b>	<b>34,790</b>	<b>98.62%</b>	<b>519</b>	<b>463</b>

Long-Term Suspensions by Month





**Short-Term Suspensions (1-5 days)  
by Gender, Ethnicity, and Special Ed Status**

**All Schools Incidents: 09/06/2019 - 12/31/2019 Enrollments: any time during 09/06/2019 - 12/31/2019**

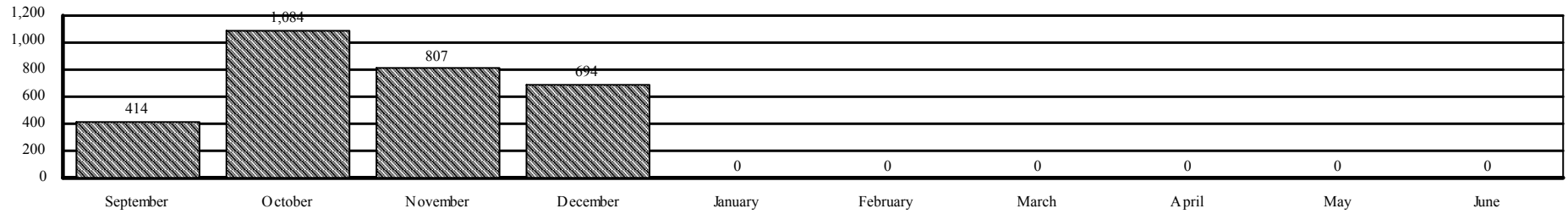
School Name	M	F	As	Am Ind	Black	Hisp	Multi	Wh	Sp Ed	Tot	Undup	Tot Enr	UnSusp	Number of Days					YTD	PrY
														1	2	3	4	5		
0003 D'Youville Porter Campus	23	13			3	32		1	13	36	28	667	95.80%	2	8	16	1	9	36	40
0006 Buffalo Ele Sch of Technology	17	5			14	5	2	1	11	22	18	632	97.15%	1	1	6	2	12	22	32
0017 Early Childhood Center	3	2			5					5	5	403	98.76%		2	2		1	5	6
0018 Dr. Antonia Pantoja Sch Ac Exc	26	11			26	9		2	31	37	22	515	95.73%	19	7	2	5	4	37	33
0019 Native American Magnet School	6	4			7	2	1		6	10	9	427	97.89%				1	9	10	14
0027 Hillery Park Elementary	51	16			44	10	3	10	29	67	41	715	94.27%	13	22	16	1	14	67	35
0030 Frank A Sedita Academy	42	31	1		5	65		2	20	73	46	861	94.66%	12	25	21	1	13	73	64
0031 Harriet Ross Tubman School	46	26			56	8		8	24	72	47	543	91.34%	10	14	23	2	22	72	63
0032 Bennett Park Montessori School	33	24	2		46	2	2	5	37	57	42	871	95.18%	13	24	5	4	12	57	51
0033 Bilingual Center	10	8			3	15			5	18	12	474	97.47%	1	4	10		2	18	13
0037 Marva J. Daniel Futures Prep Sch	11	8			15	2		2	13	19	16	553	97.11%		4	6		9	19	8
0043 Lovejoy Discovery School	45	13			30	9	6	13	32	58	42	669	93.72%	2	13	25		18	58	44
0045 International School	43	33	2		45	13		16	57	76	35	1149	96.95%	35	16	10	1	13	76	36
0048 Dr. Martin Luther King Jr.	12	2			4	7	2	1	5	14	11	448	97.54%	4	1	7	2		14	4
0050 North Park Community School										0		136	100%							
0053 Community School	16	10			22	2	1	1	13	26	21	524	95.99%	2	2	6	1	6	26	25
0054 Dr G. Blackman Sch Of Excellence	8	3			11				9	11	7	488	98.57%	1	1	5	1	3	11	26
0059 Dr.C.R.Drew Sci Magnet Annex	29	1			24	6			28	30	12	294	95.92%	1	5	5	1	18	30	19
0059 Dr.C.R.Drew Sci Magnet Museum	68	28	4		84		4	4	33	96	73	489	85.07%	3	5	39	3	45	96	135
0061 Arthur O. Eve School of Distinction	5	1			6				2	6	5	304	98.36%		1				6	24
0064 Frederick Law Olmsted North	4					3		1	4	4	2	579	99.65%		2	2			4	1
0065 Roosevelt ECC	18	1			6	10		3	1	19	9	349	97.42%	1	1	10		6	19	9
0066 North Park Middle Academy	17	4			18	2	1		15	21	14	59	76.27%	3	6	7	1	4	21	49
0067 Discovery School	25	12		1	9	1	2	24	21	37	21	592	96.45%	2	1	17	1	16	37	39
0069 Houghton Academy	35	6			16	15	1	9	34	41	24	556	95.68%	8	12	7	2	12	41	27
0072 Lorraine Elementary	54	21			41	9	7	18	32	75	46	803	94.27%	9	22	24	4	17	75	78
0074 Hamlin Park Clapp Academy	4	5			9				5	9	7	507	98.62%			3	2	1	9	3
0076 Herman Badillo Bilingual Acad	43	20		2	10	49		2	31	63	37	686	94.61%	5	5	17	7	26	63	52
0079 Pfc. W. J. Grabiarz Sch Of Exc	27	20		2	31	11	3		28	47	31	683	95.46%	1	18	19	5	4	47	35
0080 Highgate Heights Elementary	20	3			22	1			4	23	18	433	95.84%	5	7	7	1	3	23	44
0081 Buffalo Public School 81	54	12			43	14	3	6	26	66	40	856	95.33%	15	27	9	4	11	66	59
0082 Early Childhood Center	29	1	1		24			5	14	30	18	354	94.92%	6	5	9	5	5	30	43
0084 ECHC For Children										0		209	100%							
0089 Dr. Lydia T. Wright School	126	76			193	3	1	5	35	202	113	716	84.22%	3	6	98	7	88	202	106

School Name	M	F	As	Am Ind	Black	Hisp	Multi	Wh	Sp Ed	Tot	Undup	Tot Enr	UnSusp	Number of Days					YTD	PrY
														1	2	3	4	5		
0092 B.U.I.L.D. Community School	19	17			26	8		2	13	36	30	438	93.15%	7	9	10	2	8	36	52
0093 Southside Elementary	60	51			53	9	13	36	47	111	66	1053	93.73%	8	21	36	4	36	111	174
0094 West Hertel Academy	1				1				1	1	1	839	99.88%	1					1	40
0095 Waterfront Elementary	86	29	1		58	30	4	22	64	115	70	896	92.19%	5	21	38	6	45	115	91
0097 Harvey Austin School	43	17			48	8	2	2	23	60	45	595	92.44%	4		41		14	60	77
0099 Stanley M. Makowski E.C.C.	19	11			18	7	2	3	19	30	22	776	97.16%	2	17	5	3	3	30	8
0131 The Academy Schools	84	34			80	19	6	13	52	118	62	212	70.75%	2	6	17	1	92	118	109
0156 Frederick Law Olmsted School	6		2		1			3	3	6	5	885	99.44%	2	3			1	6	12
0187 Buffalo Academy for Arts	9	24			29	2	1	1	9	33	28	704	96.02%			13	2	15	33	35
0195 City Honors School at FMP										0		1084	100%							3
0196 Math Science Technology @ 39	57	19	2		55	11	8		35	76	53	225	76.44%	12	23	27	1	10	76	102
0197 Math Science Technology Prep	28	30			48	3	3	4	30	58	36	435	91.72%	13	5	14	11	12	58	71
0198 International Prep at Grover	73	34	6		66	23	3	9	56	107	66	717	90.79%	8	19	33	4	42	107	95
0206 South Park High School	30	27		1	34	9	4	9	14	57	51	938	94.56%		1	16	4	35	57	156
0207 Lafayette International High Schoc	12		4		4	1		3	1	12	11	404	97.28%		2	1		9	12	8
0208 Riverside High School	27	20			25	19		3	16	47	31	278	88.85%		1	26		18	47	69
0212 Leonardo da Vinci High School	16	12	2	1	12	10		3	13	28	23	392	94.13%	3	11	9	1	4	28	31
0301 Burgard High School	121	43		2	125	24	1	12	67	164	120	512	76.56%		5	101	5	53	164	197
0302 Emerson School of Hospitality	47	97			112	14	5	13	39	144	98	455	78.46%		14	49	12	69	144	132
0304 Hutchinson Central Technical	30	10			23	10	1	6	22	40	30	1177	97.45%	14	8	5		13	40	61
0305 McKinley High School	25	28	1		35	16		1	13	53	41	1026	96.00%	1	4	7	4	33	53	69
0309 East Community High School	76	70		5	98	27	2	14	33	146	85	331	74.32%		73	20	5	45	146	179
0353 Newcomer Academy										0		226	100%							1
0355 Buffalo School of Culinary Arts & F	25	20			29	7	2	7	22	45	40	364	89.01%		8	20	2	15	45	47
0357 Pathways Academy @ 307	32	16			27	15	1	5	21	48	39	207	81.16%	2	12	10	13	11	48	49
0358 Pathways Academy @ 205										0		58	100%							1
0359 Pathways Academy @ 206										0		40	100%							2
0360 Pathways Academy @ 301										0		44	100%							1
0363 Lewis J. Bennett HS of Innovative	41	15			41	7	1	7	31	56	46	327	85.93%	23	12	4		17	56	29
0366 Research Laboratory High School	4	6			6	1	1	2	2	10	9	171	94.74%		4	2		4	10	22
0367 Pathways Academy @ 197										0		32	100%							2
0402 Occupational Training Center	4	1			1			4	5	5	2	80	97.50%	1	2			2	5	1
0415 Middle Early College H.S.	8	15			17	3		3	4	23	18	325	94.46%	1	1	12		9	23	8
10777 CSE SPED Homebound										0			100%							



School Name	M	F	As	Am Ind	Black	Hisp	Multi	Wh	Sp Ed	Tot	Undup	Tot Enr	UnSusp	Number of Days					YTD	PrY
														1	2	3	4	5		
<b>Total</b>	<b>1933</b>	<b>1066</b>	<b>28</b>	<b>14</b>	<b>1944</b>	<b>588</b>	<b>99</b>	<b>326</b>	<b>1273</b>	<b>2999</b>	<b>2000</b>	<b>34,790</b>	<b>94.25%</b>	<b>286</b>	<b>549</b>	<b>949</b>	<b>145</b>	<b>1018</b>	<b>2999</b>	<b>3151</b>

Short Term Suspensions by Month





**Short-Term Suspensions (5 or less days)  
PK - 12 Students by Gender, Grade, and Special Ed Status**



All Schools Incidents: 09/06/2019 - 12/31/2019 Enrollments: any time during 09/06/2019 - 12/31/2019

School Name	M	F	PK	K	1	2	3	4	5	6	7	8	9	10	11	12	SpEd	Tot	Undp	Tot Enr	% UnSusp	YTD	PrY
0003 D'Youville Porter Campus	23	13			1		1	6	9	4	13	2					13	36	28	667	95.80%	36	40
0006 Buffalo Ele Sch of Technology	17	5		2		2				6	12						11	22	18	632	97.15%	22	32
0017 Early Childhood Center	3	2			3	1		1										5	5	403	98.76%	5	6
0018 Dr. Antonia Pantoja Sch Ac Exc	26	11			6					5	19	7					31	37	22	515	95.73%	37	33
0019 Native American Magnet School	6	4				1			3	2	3	1					6	10	9	427	97.89%	10	14
0027 Hillery Park Elementary	51	16	2		7	5	3	9	7	1	28	5					29	67	41	715	94.27%	67	35
0030 Frank A Sedita Academy	42	31	2	5	1	9	3	15	11	4	11	12					20	73	46	861	94.66%	73	64
0031 Harriet Ross Tubman School	46	26	3	5		7	12	13	11	14	1	6					24	72	47	543	91.34%	72	63
0032 Bennett Park Montessori School	33	24			5	2	7	15	6	7	8	7					37	57	42	871	95.18%	57	51
0033 Bilingual Center	10	8				1		1			2	14					5	18	12	474	97.47%	18	13
0037 Marva J. Daniel Futures Prep Sc	11	8			4			1	5	5		4					13	19	16	553	97.11%	19	8
0043 Lovejoy Discovery School	45	13			2	4	9		4	17	18	4					32	58	42	669	93.72%	58	44
0045 International School	43	33			19	1		28	12	6	5	5					57	76	35	1149	96.95%	76	36
0048 Dr. Martin Luther King Jr.	12	2	5	3	4	2											5	14	11	448	97.54%	14	4
0050 North Park Community School																		0		136	100%		
0053 Community School	16	10		1				1	5	4	4	11					13	26	21	524	95.99%	26	25
0054 Dr G. Blackman Sch Of Excellen	8	3			1	5	4	1									9	11	7	488	98.57%	11	26
0059 Dr.C.R.Drew Sci Magnet Annex	29	1		9	16	5											28	30	12	294	95.92%	30	19
0059 Dr.C.R.Drew Sci Magnet Museu	68	28					3	5	12	17	38	21					33	96	73	489	85.07%	96	135
0061 Arthur O. Eve School of Distincti	5	1			1	1	4										2	6	5	304	98.36%	6	24
0064 Frederick Law Olmsted North	4						4										4	4	2	579	99.65%	4	1
0065 Roosevelt ECC	18	1		11	6	2											1	19	9	349	97.42%	19	9
0066 North Park Middle Academy	17	4									14	7					15	21	14	59	76.27%	21	49
0067 Discovery School	25	12	1	1		12	3		1	1	11	7					21	37	21	592	96.45%	37	39
0069 Houghton Academy	35	6				1	1	16	1	11	3	8					34	41	24	556	95.68%	41	27
0072 Lorraine Elementary	54	21				1	6	9	23	18	10	8					32	75	46	803	94.27%	75	78
0074 Hamlin Park Clapp Academy	4	5						4			3	2					5	9	7	507	98.62%	9	3
0076 Herman Badillo Bilingual Acad	43	20		2		2	12	7	5	9	13	13					31	63	37	686	94.61%	63	52
0079 Pfc. W. J. Grabiarz Sch Of Exc	27	20			2		1	1	2	19	9	13					28	47	31	683	95.46%	47	35
0080 Highgate Heights Elementary	20	3		1	2	3			1	9		7					4	23	18	433	95.84%	23	44
0081 Buffalo Public School 81	54	12		1	8		3	4	15	12	11	12					26	66	40	856	95.33%	66	59
0082 Early Childhood Center	29	1	1	1	4	3	2	19									14	30	18	354	94.92%	30	43
0084 ECHC For Children																		0		209	100%		
0089 Dr. Lydia T. Wright School	126	76	4	2	9	6	27	17	26	24	60	27					35	202	113	716	84.22%	202	106
0092 B.U.I.L.D. Community School	19	17		1	2		3	1	11	6	6	6					13	36	30	438	93.15%	36	52

School Name	M	F	PK	K	1	2	3	4	5	6	7	8	9	10	11	12	SpEd	Tot	Undp	Tot Enr	% UnSusp	YTD	PrY
0093 Southside Elementary	60	51	4		8			10	30	14	18	27					47	111	66	1053	93.73%	111	174
0094 West Hertel Academy	1									1							1	1	1	839	99.88%	1	40
0095 Waterfront Elementary	86	29		6	6	18	7	9	6	9	19	35					64	115	70	896	92.19%	115	91
0097 Harvey Austin School	43	17		1	2	6		9	12	6	17	7					23	60	45	595	92.44%	60	77
0099 Stanley M. Makowski E.C.C.	19	11		2	1	3	9	15									19	30	22	776	97.16%	30	8
0131 The Academy Schools	84	34									4	15	19	35	33	12	52	118	62	212	70.75%	118	109
0156 Frederick Law Olmsted School	6								1		2		1		1	1	3	6	5	885	99.44%	6	12
0187 Buffalo Academy for Arts	9	24									1	2	10	8	8	4	9	33	28	704	96.02%	33	35
0195 City Honors School at FMP																		0		1084	100%		3
0196 Math Science Technology @ 39	57	19							13	14	31	18					35	76	53	225	76.44%	76	102
0197 Math Science Technology Prep	28	30											7	27	18	6	30	58	36	435	91.72%	58	71
0198 International Prep at Grover	73	34										10	29	30	25	13	56	107	66	717	90.79%	107	95
0206 South Park High School	30	27											36	13	4	4	14	57	51	938	94.56%	57	156
0207 Lafayette International High School	12												2	3	4	3	1	12	11	404	97.28%	12	8
0208 Riverside High School	27	20											9	27	11		16	47	31	278	88.85%	47	69
0212 Leonardo da Vinci High School	16	12											7	3	8	10	13	28	23	392	94.13%	28	31
0301 Burgard High School	121	43											59	54	25	26	67	164	120	512	76.56%	164	197
0302 Emerson School of Hospitality	47	97											60	50	18	16	39	144	98	455	78.46%	144	132
0304 Hutchinson Central Technical	30	10											14	16	5	5	22	40	30	1177	97.45%	40	61
0305 McKinley High School	26	28											11	26	7	9	14	54	42	1026	95.91%	54	69
0309 East Community High School	76	70											81	25	28	12	33	146	85	331	74.32%	146	179
0353 Newcomer Academy																		0		226	100%		1
0355 Buffalo School of Culinary Arts &	25	20											17	14	10	4	22	45	40	364	89.01%	45	47
0357 Pathways Academy @ 307	32	16											10	18	15	5	21	48	39	207	81.16%	48	49
0358 Pathways Academy @ 205																		0		58	100%		1
0359 Pathways Academy @ 206																		0		40	100%		2
0360 Pathways Academy @ 301																		0		44	100%		1
0363 Lewis J. Bennett HS of Innovative	41	15											26	18	8	4	31	56	46	327	85.93%	56	29
0366 Research Laboratory High School	4	6											7	2	1		2	10	9	171	94.74%	10	22
0367 Pathways Academy @ 197																		0		32	100%		2
0402 Occupational Training Center	4	1															5	5	2	80	97.50%	5	1
0415 Middle Early College H.S.	8	15											14	5	3	1	4	23	18	325	94.46%	23	8
10777 CSE SPED Homebound																		0			100%		

School Name	M	F	PK	K	1	2	3	4	5	6	7	8	9	10	11	12	SpEd	Tot	Undp	Tot Enr	% UnSusp	YTD	PrY
<b>Total</b>	<b>1934</b>	<b>1066</b>	22	54	120	103	124	217	232	245	394	323	419	374	232	135	<b>1274</b>	<b>3000</b>	<b>2001</b>	<b>34,790</b>	<b>94.25%</b>	<b>3000</b>	<b>3151</b>

Short-Term Suspensions by Month

