

MSP

Grade 2 Module 1

Lesson Refreshers

&

Homework Starters

Name _____

Date _____

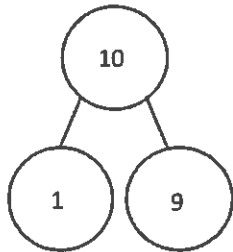
1. Add or subtract. Complete the number bond for each set.

$$9 + 1 = \underline{10}$$

$$1 + 9 = \underline{10}$$

$$10 - 1 = \underline{9}$$

$$10 - 9 = \underline{1}$$

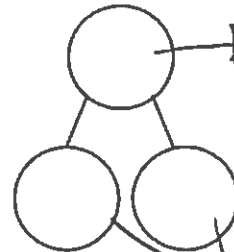


$$8 + 2 = \underline{\quad}$$

$$2 + 8 = \underline{\quad}$$

$$10 - 2 = \underline{\quad}$$

$$10 - 8 = \underline{\quad}$$



largest number

the 2 smaller numbers

a number bond contains a fact family

2. Solve. Draw a number bond for each set.

$$6 + 4 = \underline{\quad}$$

$$3 + 7 = \underline{\quad}$$

$$4 + 6 = \underline{\quad}$$

$$7 + 3 = \underline{\quad}$$

$$10 - 4 = \underline{\quad}$$

$$10 - 7 = \underline{\quad}$$

$$10 - 6 = \underline{\quad}$$

$$10 - 3 = \underline{\quad}$$

3. Solve.

$$10 = 7 + \underline{\quad}$$

$$10 = \underline{\quad} + 8$$

$$10 = 3 + \underline{\quad}$$

$$10 = \underline{\quad} + 4$$

$$10 = 5 + \underline{\quad}$$

$$10 = \underline{\quad} + 6$$

$$10 = 2 + \underline{\quad}$$

$$10 = \underline{\quad} + 1$$

what 2 numbers make up the larger number

Name _____

Date _____

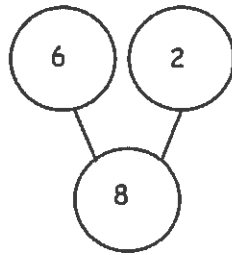
1. Add or subtract. Draw a number bond for (b).

a. $6 + 2 = \underline{8}$

$2 + 6 = \underline{8}$

$8 - 2 = \underline{6}$

$8 - 6 = \underline{2}$



b. _____ = 3 + 5

_____ = 5 + 3

_____ = 8 - 3

_____ = 8 - 5

Place Value

tens	ones

a number bond contains a fact family

2. Solve.

$20 + 4 = \underline{\quad}$

$40 + 3 = \underline{\quad}$

$70 + 2 = \underline{\quad}$

$80 + 5 = \underline{\quad}$

_____ = 20 + 9

_____ = 40 + 8

_____ = 50 + 6

_____ = 90 + 7

*make sure you add tens with tens and ones with ones by place value

3. Solve.

$14 = 10 + \underline{\quad}$

$23 = 20 + \underline{\quad}$

$71 = 70 + \underline{\quad}$

$82 = 80 + \underline{\quad}$

$19 = \underline{\quad} + 9$

$29 = \underline{\quad} + 9$

$78 = \underline{\quad} + 8$

$87 = \underline{\quad} + 7$

what number is missing

Name _____

Date _____

1. Solve.

a. $20 + 7 = \underline{27}$

$20 + 70 = \underline{\hspace{2cm}}$

$62 + 3 = \underline{65}$



$62 + 30 = \underline{\hspace{2cm}}$

c. $30 + 40 = \underline{\hspace{2cm}}$

$31 + 40 = \underline{\hspace{2cm}}$

$35 + 4 = \underline{\hspace{2cm}}$

$45 + 30 = \underline{\hspace{2cm}}$

b. $80 - 20 = \underline{\hspace{2cm}}$

$85 - 2 = \underline{\hspace{2cm}}$

$85 - 20 = \underline{\hspace{2cm}}$

$86 - 20 = \underline{\hspace{2cm}}$

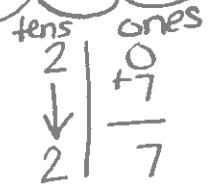
d. $70 - 30 = \underline{\hspace{2cm}}$

$75 - 30 = \underline{\hspace{2cm}}$

$78 - 3 = \underline{\hspace{2cm}}$

$75 - 40 = \underline{\hspace{2cm}}$

To solve $20 + 7$
add ones to ones
and add tens to
tens



break
the number
into tens
and ones

|||
|||

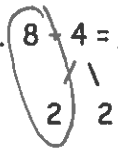
$2 + 3 = 5$

Name _____

Date _____

Solve.

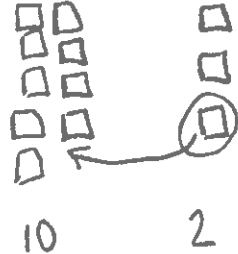
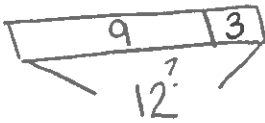
1. $8 + 4 = \underline{\quad}$



$8 + 2 = 10$
 $10 + 2 = 12$

2. $9 + 7 = \underline{\quad}$

3. $9 + 3 = \underline{12}$



4. $8 + 6 = \underline{\quad}$

5. $7 + 6 = \underline{\quad}$

6. $7 + 8 = \underline{\quad}$

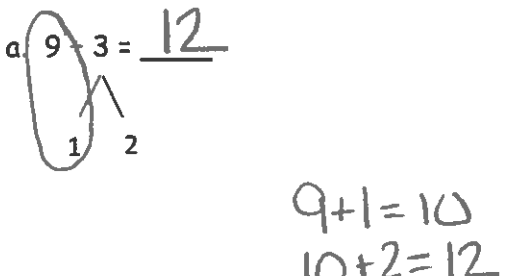
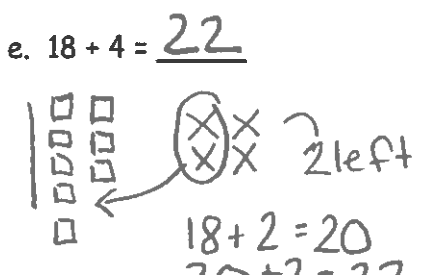
7. $8 + 8 = \underline{\quad}$

8. $8 + 9 = \underline{\quad}$

Name _____ Date _____

1. Solve.

make groups of ten

<p>a. $9 + 3 = \underline{12}$</p>  <p>$9 + 1 = 10$ $10 + 2 = 12$</p>	<p>b. $29 + 5 = \underline{\quad}$</p>
<p>c. $49 + 7 = \underline{\quad}$</p>	<p>d. $59 + 6 = \underline{\quad}$</p>
<p>e. $18 + 4 = \underline{22}$</p>  <p>$18 + 2 = 20$ $20 + 2 = 22$</p>	<p>f. $48 + 6 = \underline{\quad}$</p>
<p>g. $58 + 6 = \underline{\quad}$</p>	<p>h. $78 + 8 = \underline{\quad}$</p>

Name _____

Date _____



1. Take out ten.

$\begin{array}{r} 30 \\ / \ \backslash \\ 20 \ 10 \end{array}$	40	50
70	60	80

2. Solve.

$10 - 1 = \underline{\quad}$	$10 - 4 = \underline{\quad}$	$10 - 9 = \underline{\quad}$
$10 - 7 = \underline{\quad}$	$10 - 2 = \underline{\quad}$	$10 - 5 = \underline{\quad}$

3. Solve.

<p><i>1 ten left</i> → <i>one left</i></p> <p>a. $20 - 9 = \underline{11}$</p> $\begin{array}{r} 20 \\ \text{O} \ \text{O} \ \text{O} \ \text{O} \ \text{O} \ \text{O} \ \text{O} \ \text{O} \ \text{O} \ \text{O} \\ / \ \backslash \\ 10 \ 10 \end{array}$ <p>$10 - 9 = 1$ $10 + 1 = 11$</p>	<p>b. $30 - 9 = \underline{\quad}$</p>
---	---

break apart a group of ten to subtract from

Whatever is left in the ones place gets added to the tens place, giving you a two digit number.

Andrzejewski



Name _____ Date _____

Split the tens and ones

1. Take out ten.

$\begin{array}{r} 17 \\ / \ \backslash \\ 7 \ 10 \end{array}$	14	18
13	16	19

2. Solve.



$10 - 2 = \underline{8}$	$10 - 7 = \underline{\quad}$	$10 - 6 = \underline{\quad}$
$10 - 5 = \underline{\quad}$	$10 - 8 = \underline{\quad}$	$10 - 9 = \underline{\quad}$

3. Solve.

<p>a. $14 - 9 = \underline{5}$</p> <p style="margin-left: 40px;">$10 - 9 = 1$ $1 + 4 = \underline{5}$</p> <p>\rightarrow 1 is left, so add it to the other ones</p>	<p>b. $15 - 8 = \underline{\quad}$</p>
<p>c. $13 - 7 = \underline{\quad}$</p>	<p>d. $12 - 8 = \underline{\quad}$</p>

Name _____

Date _____

1. Take out ten.

26 $\swarrow \searrow$ 1 group of 10 16 10 \uparrow 85	34	58
the ones place stays the same	77	96

2. Solve.

$10 - 1 = \underline{\quad}$	$10 - 5 = \underline{\quad}$	$10 - 2 = \underline{\quad}$
$10 - 4 = \underline{\quad}$	$10 - 7 = \underline{\quad}$	$10 - 8 = \underline{\quad}$

3. Solve.

a. $13 - 7 = \underline{\quad}$ 	b. $15 - 8 = \underline{\quad}$
c. $14 - 6 = \underline{\quad}$	d. $16 - 9 = \underline{\quad}$