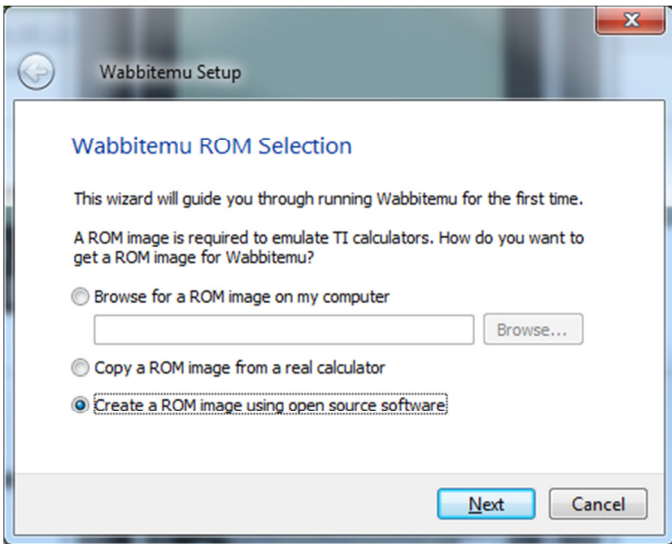
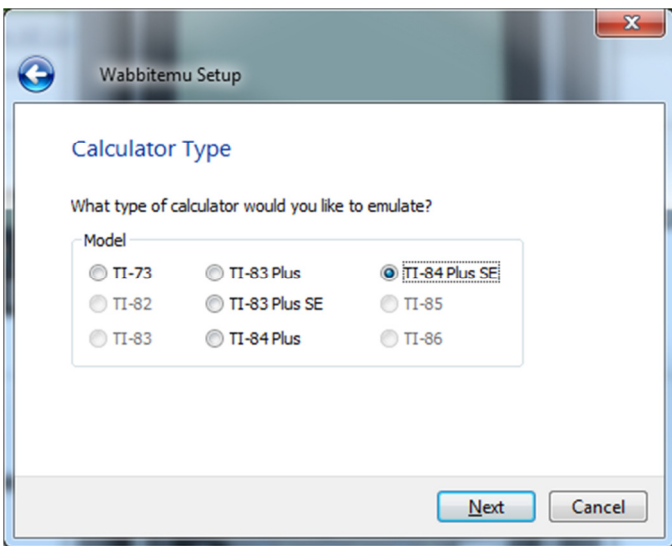


To install the “Wabbitemu” graphing calculator emulator on your PC, go to <http://wabbit.codeplex.com/> and save the executable in a convenient location.

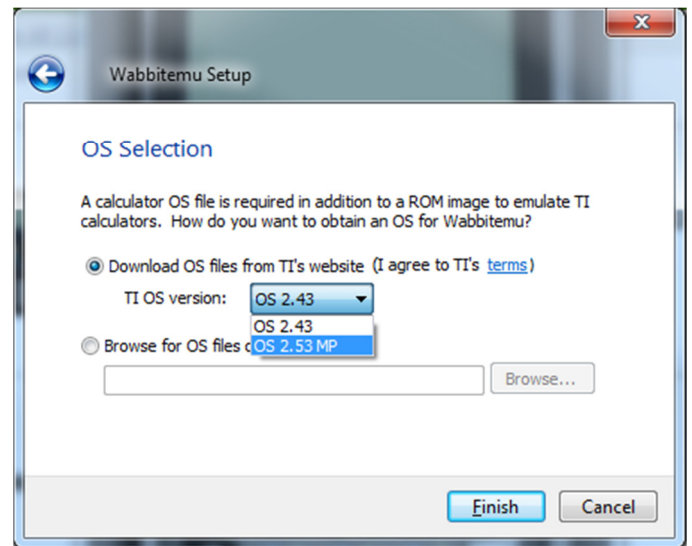
When you run the executable, you will see the menu below. Select “Create a ROM image using open source software”



Next, for the Calculator Type, select “TI-84 Plus SE”:

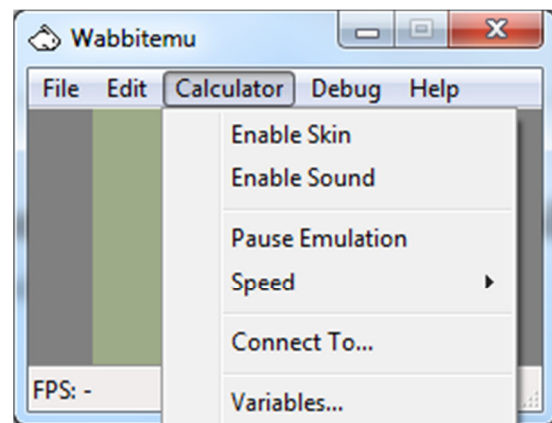


You will then be prompted to make an OS Selection. Select the option to download the OS files from TI’s website and select the TI OS version “OS 2.53 MP”:



Next, save the ROM to your hard drive. The default selection of “Libraries | Documents | Tools” is sufficient.

When you start the Wabbitemu executable, you should see a window like the one below. Select “Calculator | Enable Skin” to see the whole calculator.



If you have any questions or problems, don’t hesitate to contact me by email: chanc@edmonds.wednet.edu.