

App·Control

Vision Plug-In



USER GUIDE



GenevaLogic

ACTIVE TEACHING SYSTEMS

Notice

Copyright© 2008, GenevaLogic. All rights reserved.

Document Date: November 6, 2008

Document Version: 6.8.3

The content in this document represents the current view of GenevaLogic as of the date of publication. Because GenevaLogic responds continually to changing market conditions, this document should not be interpreted as a commitment on the part of GenevaLogic. GenevaLogic cannot guarantee the accuracy of any information presented after the date of publication.

Vision is a registered trademark of GenevaLogic. Accel, App-Control, Plan-It, Pointer, Print-Limit, Protect-On, Surf-Lock, GenevaLogic and the GenevaLogic logo are trademarks of GenevaLogic.

Microsoft, Windows, and the Windows logo are trademarks, or registered trademarks of Microsoft Corporation in the United States and/or other countries. All other brand names are trademarks or registered trademarks of their respective companies.

Information in this document is subject to change without notice. For the latest documentation, visit our Web site at www.genevalogic.com.

North America

info.us@genevalogic.com
15725 SW Greystone Court, Suite 105
Beaverton, OR 97006 USA
Phone: 503-352-3599
Fax: 503-352-3413

All Other Locations

info.ch@genevalogic.com
Chasseralstrasse 1-9
CH-4900 Langenthal Switzerland
Phone: +41-(0)62-957-70-40
Fax: +41-(0)62-957-70-50

Contents

Welcome to App-Control	1
Technical Support	2
Activate App-Control	3
Licensing App-Control	3
App-Control in Vision	4
Set Up App-Control.	5
Add Applications to the App-Control Menu	5
Remove Applications from the App-Control Menu	7
View App-Control Shortcuts	7
Working with Student Computers	8
Start an Application on Student Computers	8
Turn Off Kiosk Mode	9
Close All Applications Running on a Student Computer	9
Start an Application Using the Run Command	10
Share a Document with Your Students	11
Customize App-Control.	13
Change the Icon Associated with an Application	13
Change the Window Size of an Application	13
Rename a Program in the App-Control Menu	14

Welcome to App-Control

This guide explains how to configure App-Control and use it to manage the software programs your students use during classtime. App-Control offers a number of features to give your students only the tools they need without any distractions:

- Start and close applications on student computers from your computer.
- Share documents and Web sites with your class during instruction.
- Force student computers to run selected applications in a special locked mode, known as Kiosk mode. This prevents students from using other programs during classtime.

Technical Support

GenevaLogic offers a number of resources to help you make the most of App-Control. When you need additional support, try one of the following.

Refer to App-Control Help

App-Control Help offers information about common features. You can open Help from the toolbar on the Vision dashboard.

Visit Our Web Site

Our Web site, www.genevalogic.com, offers a list of support resources, including a knowledge base, user documentation, and software updates.

Contact Our Technical Support Team

You can contact Technical Support through by phone, e-mail, or our Web site.

In North America

Phone: 866-725-7803 (toll free)

E-mail: support.us@genevalogic.com

Web: www.genevalogic.com

Our hours are 7:30 AM–4:30 PM
Pacific Time.

All Other Locations

Outside of North America, the technical support of our products is provided through our international network of distributors and resellers. Please contact the local GenevaLogic distributor in your area. For a list of distributors, visit our international support page at www.genevalogic.com.

Activate App-Control

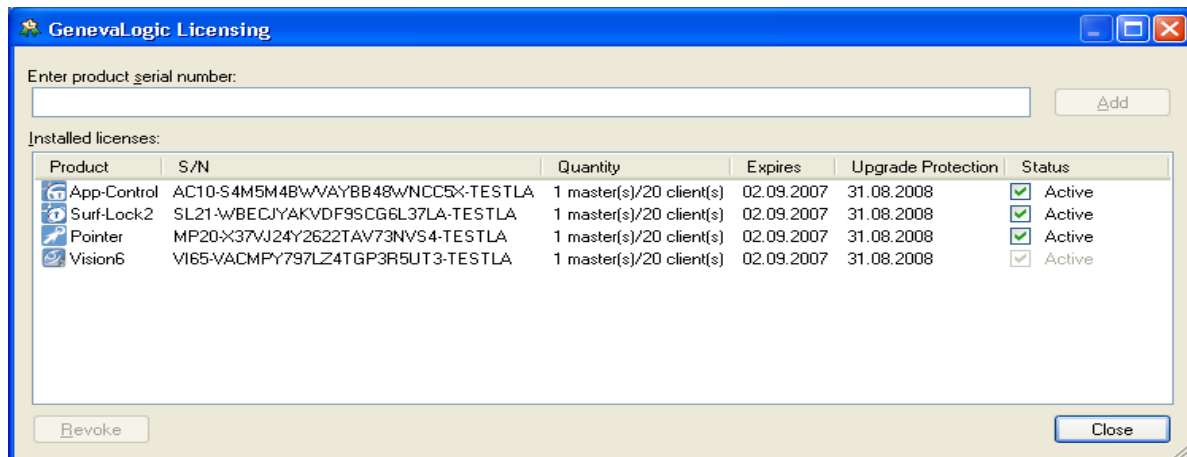
Starting with Vision6 version 6.7, App-Control is automatically installed with Vision. You can run App-Control in a 30 day Trial mode free of charge or apply a license key to use it indefinitely. Either of these actions activates App-Control.

If you choose not to run the 30 day Trial, or simply allow it to expire, App-Control is deactivated. You may reactivate App-Control at any time by applying a license key via the **GenevaLogic Licensing Utility** (see the **Vision User Guide** for additional information)

Licensing App-Control

App-Control is most easily licensed and activated by entering a valid license key during the installation process. If you need to enter a license key afterwards, navigate to **Start Menu -> All Programs -> GenevaLogic -> GenevaLogic Licensing Utility**.

Once open, all of your current licenses and their status are shown:



- **To add or update a license for App-Control**, enter the new license key in the License Field. This is most easily accomplished via copy and paste from an email or text document.

- **To activate or deactivate a plug-in**, check or uncheck the **Status** checkbox. When a plug-in is deactivated, the respective icon is removed from the Vision toolbar.

NOTE:As soon as the trial period of a plug-in has expired, it can only be reactivated with a valid license key.

NOTE:You may only run a 30 day Trial once. If you require additional time to evaluate the product, please contact GenevaLogic sales.

App-Control in Vision

When you activate App-Control, Vision replaces the **Run Application** button on the Vision toolbar with the **App-Control** button. The Run Application feature is standard with Vision and its functionality, using the run command to start applications on student machines, is included in App-Control.



Run Application button



App-Control button

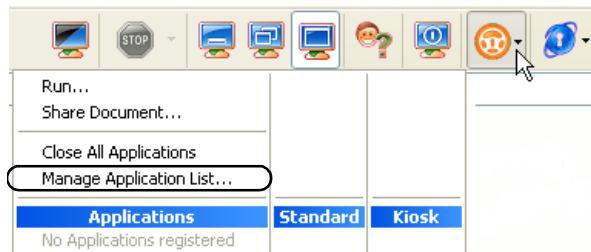
Set Up App-Control

Add Applications to the App-Control Menu

App-Control allows you to create a menu of the applications that you want to start on student computers. By adding the applications you use most often to the App-Control menu, you can quickly start them on student computers without typing the name of the program or searching for its executable file.

NOTE:The applications you add to the menu must be installed on both the instructor and student computers in order to start them with App-Control.

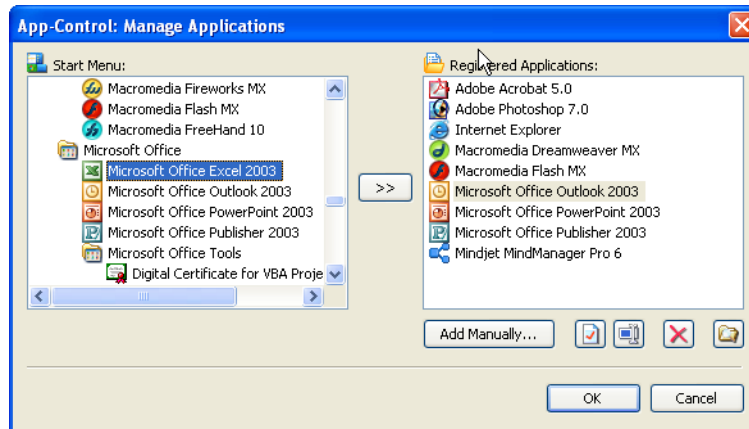
1. On the Vision toolbar click the **App-Control** button, and then click **Manage Application List**.



App-Control menu: No applications have been added to the list.

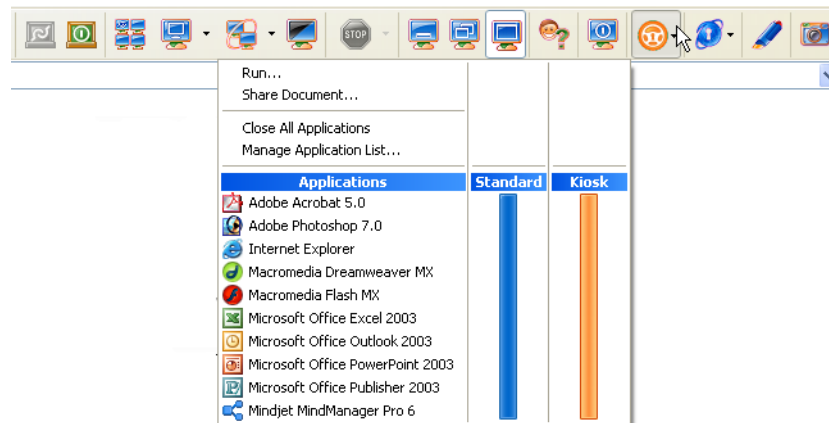
2. To add an application to your App-Control menu, do one of the following:
 - In the **Start Menu** list, select the application you want, and then click the **Right Arrow** button (>>).
 - Click **Add Manually** and locate the application executable file (.exe).
 - From **Windows Startmenu, Windows Explorer or Windows Desktop**, right-click on an application icon and select **App-Control -> Add applicationXYZ to Application List**.

App-Control adds the program to the list of Registered Applications.



Manage Applications window: Select an application, and then click the arrow button to add it to the list of Registered Applications.

3. Click **OK** to save your changes. The applications you added are now available from the App-Control menu in Vision.

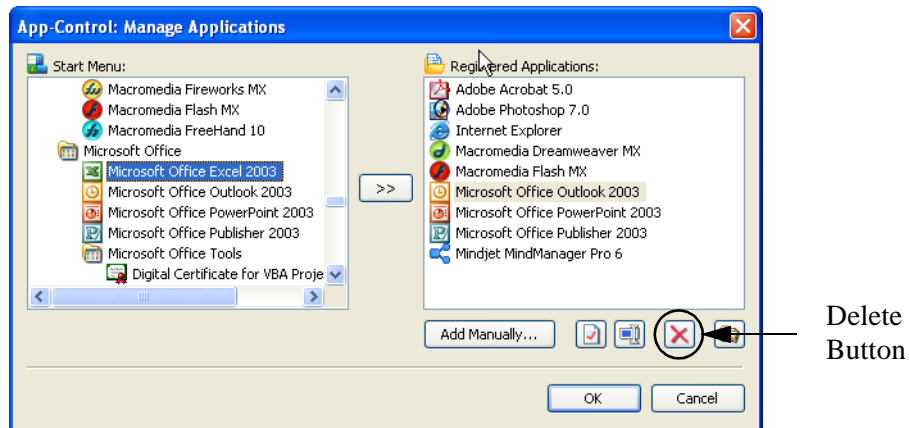


App-Control menu with added applications.

Remove Applications from the App-Control Menu

You can remove applications you no longer want to appear on the App-Control menu.

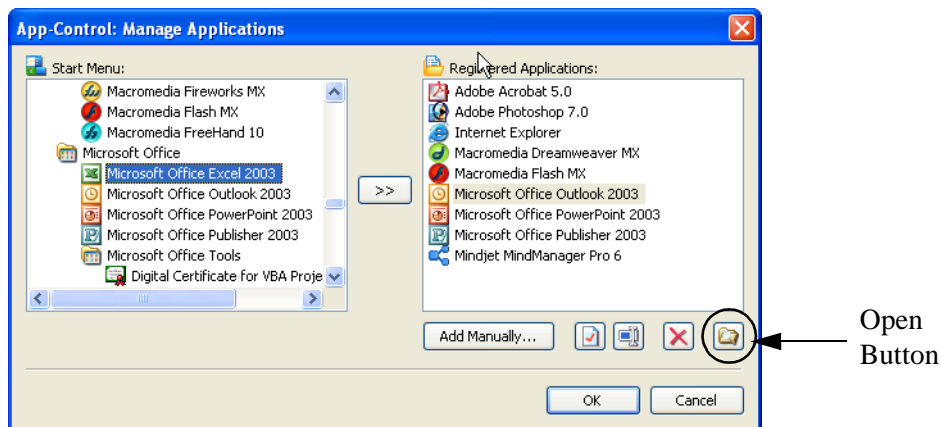
- In the **Manage Applications** window, under **Registered Applications**, select the application you want to remove from the App-Control menu and click the **Delete** button.



View App-Control Shortcuts

When you add an application to the App-Control menu, you create a shortcut to that application, which you can view in Windows Explorer.

- Open the **Manage Applications** window, and then click the **Open** button. The shortcuts directory opens in Windows Explorer.



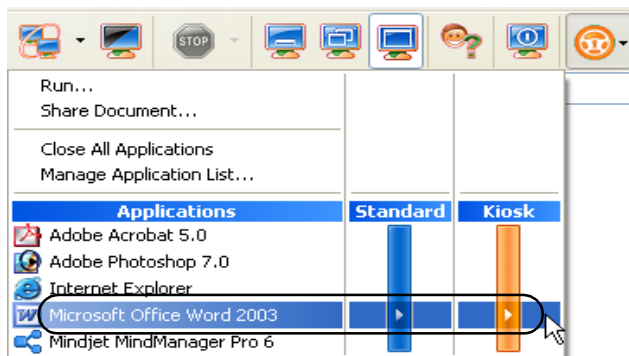
Working with Student Computers

Start an Application on Student Computers

When you select an application to share with your class, you can choose to give students access to their computers while they use it (Standard mode) or you can start the application in Kiosk mode. Kiosk mode allows students to use all the functions of the selected application while it prevents them from accessing other areas of their computers.

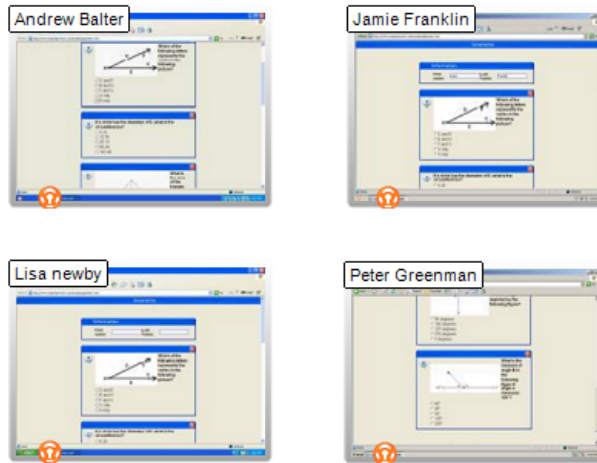
For example, when you start Microsoft Word in Kiosk mode, students are limited to using that application. The students see only Word on their desktops. They do not have access to other applications: the Start menu is not available; the taskbar at the bottom of the screen is locked; and students cannot launch Windows Explorer to search for other programs.

1. On the Vision toolbar click the **App-Control** button.
2. Under **Applications** find the program you want and click the corresponding start button.
 - To allow students to close the application or start other applications while they work, click the start button under the **Standard** heading.
 - To prevent students from closing the application or working with other applications, click the start button under the **Kiosk** heading.



Application menu:
Select the application you want and the mode in which you want it to start: Standard or Kiosk.

When you start a program in Kiosk mode, an orange Kiosk badge appears on the student computers in the dashboard.



TIP: You can start more than one application in Kiosk mode.

Turn Off Kiosk Mode

You can switch an application from Kiosk mode to Standard mode without closing the application. For example, during a lesson using Microsoft Word you may start the program in Kiosk mode to keep the class on track. When you finish your lesson, you can turn off Kiosk mode without closing the program. Students can continue working in Word or, if they choose, start other programs.

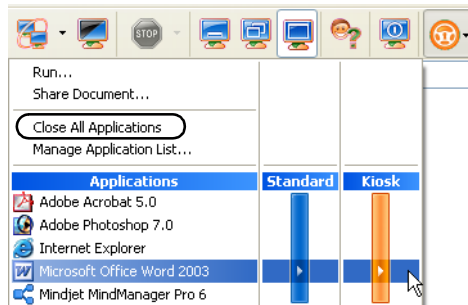
- On the Vision toolbar click the **Stop** button.



Close All Applications Running on a Student Computer

You can close all the programs running on student computers at one time. This is helpful when you want to prepare for the next part of the lesson or the next class period.

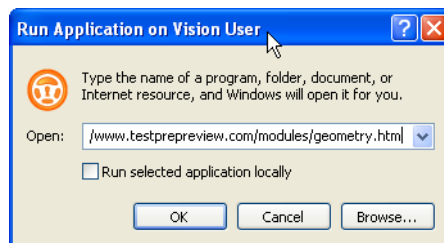
- Click the **App-Control** button, and then click **Close All Applications**. If students have any work in progress, they will be asked to save it before the application closes.



Start an Application Using the Run Command

You can use the Run command to start an application on a student computer. The Run command does not require you to add an application to the App-Control menu before you can start it remotely.

1. On the Vision toolbar click the **App-Control** button, and then click **Run**. The **Run Application** window opens.



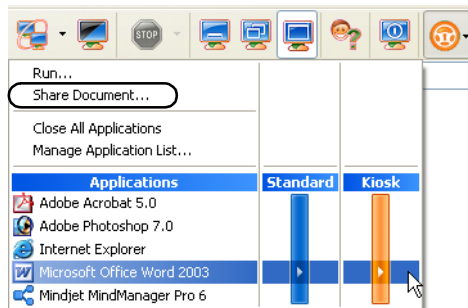
2. Start an application or open a Web site in one of the following ways:
 - Type the executable name of the application, such as Excel.exe for Microsoft Excel, or the address of the Web site.
 - Drag an application shortcut from the **Start** menu, or a Web address from a browser address bar, to the **Open** box.
 - Click **Browse...** to open an explorer view to look for an application
 - Click the down arrow to choose from a list of programs and Web sites you have used previously.
3. (optional) If you want to start the program or open the Web site on your computer, select the **Run selected application locally** check box.
4. Click **OK**.

Share a Document with Your Students

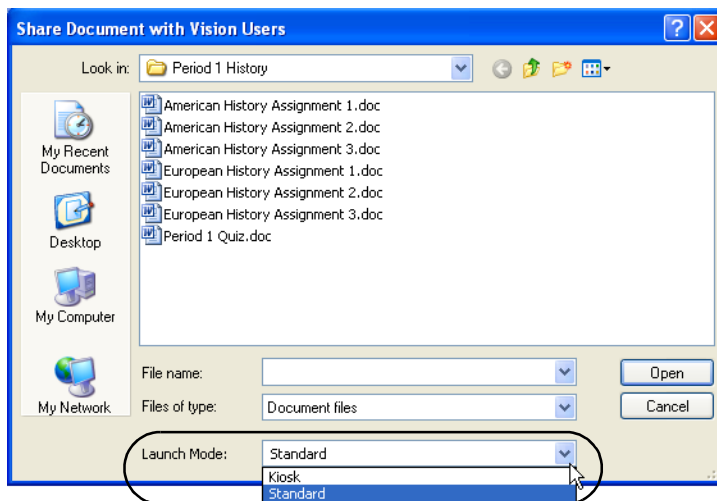
In addition to starting a program on your student computers, you can also open documents that you want to share with your classroom. This is helpful when you want to distribute a worksheet or other assignment electronically.

When you select a document and share it with your class, App-Control opens a copy of that document on each student computer.

1. On the Vision toolbar click the **App-Control** button, and then click **Share Document**.

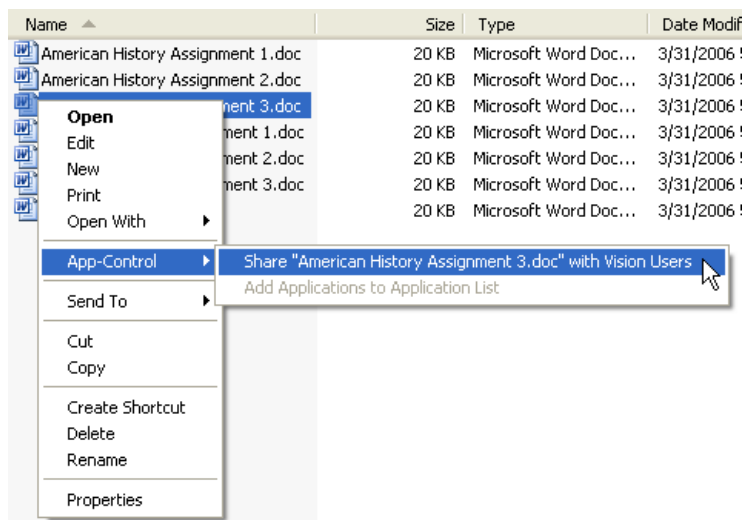


2. Select the document file you want to share, and then select a Launch Mode, Standard or Kiosk.
 - To allow students to close or start other applications while they work with this document, choose Standard.
 - To prevent students from closing or starting applications while they work with this document, choose Kiosk.

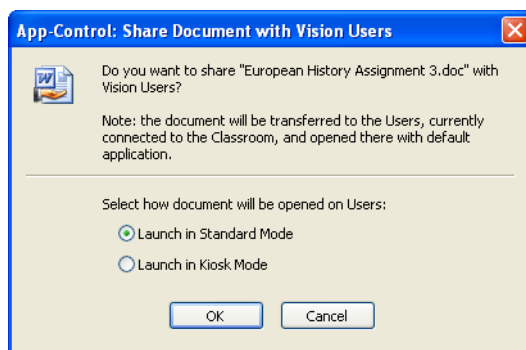


3. Click **Open**. A copy of the document opens on the student computers.

TIP: Another way to share a document is to right-click a document file, point to App-Control on the shortcut menu, and then click **Share [document name] with Vision users**. Next, select the document Launch mode, Standard or Kiosk, and a copy of the document opens on the student computers.



The **Share Document** command is available when you right-click a document file.



You can select either Standard or Kiosk mode for the document.

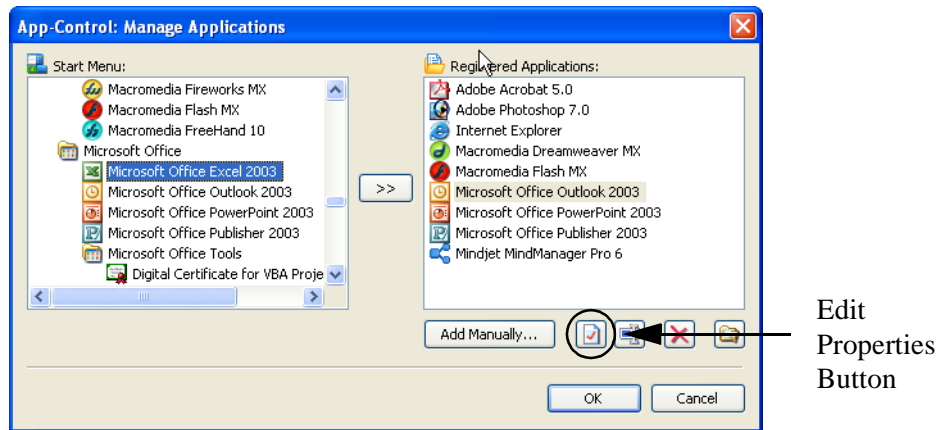
Customize App-Control

Change the Icon Associated with an Application

1. On the Vision toolbar click the **App-Control** button, and then click **Manage Application List**.



2. In the **Registered Applications** list, select the application you want and then click the **Edit Properties** button.



3. In the application **Properties** window, click **Change Icon**.
4. In the **Change Icon** window, select an icon from the list, or click **Browse** to search for a different icon.
5. Click **OK** to save your changes.

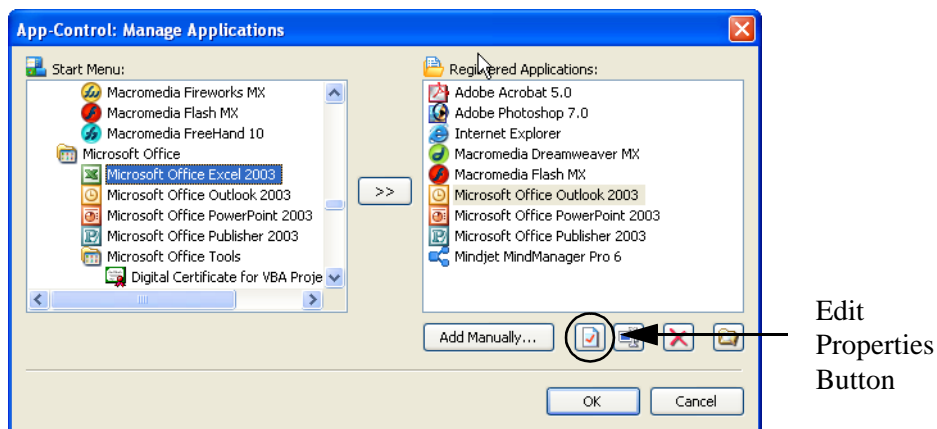
Change the Window Size of an Application

You can change the size of an application window that appears on student computers. For example, you can configure Microsoft Word to appear in window that covers the entire student screen or is minimized to a button on the student taskbar.

1. On the Vision toolbar click the **App-Control** button, and then click **Manage Application List**.



- In the **Registered Applications** list, select the application you want and then click the **Edit Properties** button.



- In the application **Properties** window, select a window size from the **Run** box:
 - Normal window
 - Minimized
 - Maximized
- Click **OK** to save your changes.

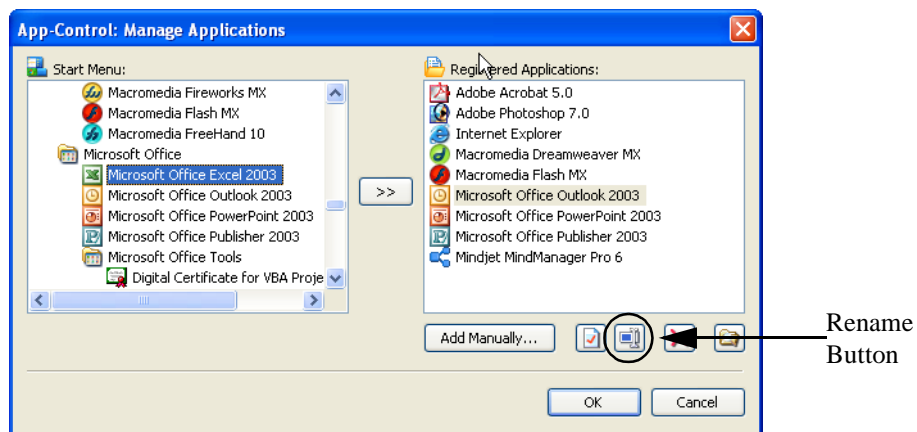
Rename a Program in the App-Control Menu

You can rename the applications that appear in the App-Control menu.

- On the Vision toolbar click the **App-Control** button, and then click **Manage Application List**.



2. In the **Registered Applications** list, select the application you want to rename, and then click the **Rename** button.



3. Type the name that you want to appear for this application.
4. Click **OK** to save your changes.

