

SPELLING WORDS

1. *soul*
2. *smoke*
3. *move*
4. *clue*
5. *fruits*
6. *lose*
7. *chose*
8. *stole*
9. *prove*
10. *produce*
11. *juice*
12. *drove*
13. *Tuesday*
14. *rescue*
15. *continue*
16. *issue*
17. *ego*
18. *argue*
19. *cruise*
20. *toll*

Handwriting

Tip: Remember to keep the joining stroke high when joining other letters to *o*. Otherwise, the letter *o* could look like an *a*.



Words with Long o and u

► Write the Spelling Word that is the opposite of each word or group of words.

1. be still _____
2. find _____
3. agree _____
4. stop _____
5. deny _____
6. gave _____
7. abandon _____
8. road trip _____



► Write the Spelling Word that best completes each sentence.

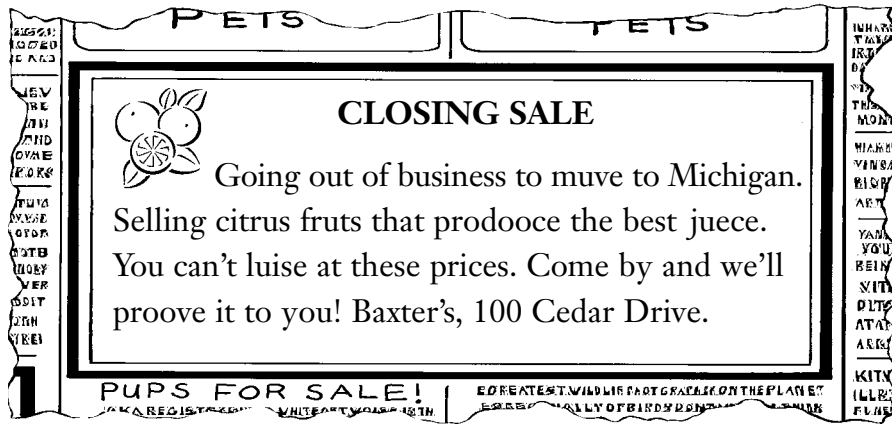
9. You will need a _____ to answer the riddle.
10. Dairy cows _____ milk.
11. The government will _____ a tax refund.
12. The burning leaves gave off _____.
13. Juanita drank a glass of _____.
14. The boastful man had a big _____.
15. Sunlight and water help _____ to grow.
16. Monday night leads to _____ morning.

► Write the following words: *soul*, *drove*, *chose*, *toll*. Use your best handwriting.

17. _____
18. _____
19. _____
20. _____

Name _____

► Read the newspaper advertisement. Circle the six misspelled words. Then write the words correctly.



- | | |
|----------|----------|
| 1. _____ | 4. _____ |
| 2. _____ | 5. _____ |
| 3. _____ | 6. _____ |

► Circle the words in each group that look wrong. Write the word that is correct.

- | | | | |
|---------------|----------|-----------|-------|
| 7. smoke | smoak | smoce | _____ |
| 8. jooce | guice | juice | _____ |
| 9. cruze | cruise | croose | _____ |
| 10. lose | lozse | lews | _____ |
| 11. choase | choes | chose | _____ |
| 12. prodduce | produse | produce | _____ |
| 13. Tuesday | Tuesday | Toseday | _____ |
| 14. continnue | continue | cunntinue | _____ |



SPELLING WORDS

1. soul
2. smoke
3. move
4. clue
5. fruits
6. lose
7. chose
8. stole
9. prove
10. produce
11. juice
12. drove
13. Tuesday
14. rescue
15. continue
16. issue
17. ego
18. argue
19. cruise
20. toll

SPELLING STRATEGY

Comparing Spellings

If you don't know how to spell a word with a long *o* or a long *u* sound, think about how the sounds are spelled. Choose the spelling that looks right to you.

Name _____

SPELLING WORDS

1. *soul*
2. *smoke*
3. *move*
4. *clue*
5. *fruits*
6. *lose*
7. *chose*
8. *stole*
9. *prove*
10. *produce*
11. *juice*
12. *drove*
13. *Tuesday*
14. *rescue*
15. *continue*
16. *issue*
17. *ego*
18. *argue*
19. *cruise*
20. *toll*

► **Missing Vowels** Write the missing vowels to complete the Spelling Words. Then write the words.

1. s _____ l _____
2. cl _____
3. st _____ l _____
4. dr _____ v _____
5. T _____ sd _____ y _____
6. _____ ss _____
7. j _____ c _____
8. cr _____ s _____
9. fr _____ ts _____
10. pr _____ v _____

► **Word Scramble** Unscramble each group of letters to write a Spelling Word.

11. ersceu _____
12. tcouneni _____
13. goe _____
14. ugrae _____
15. ltol _____
16. luce _____
17. cdopure _____

