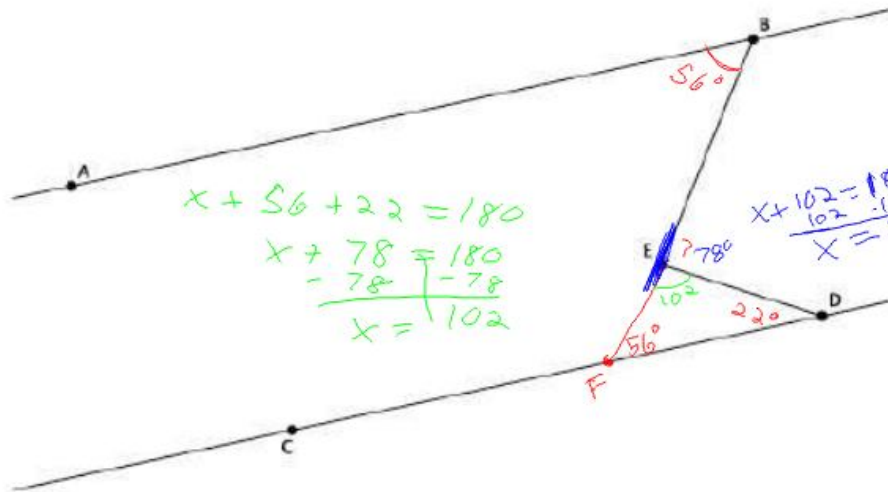
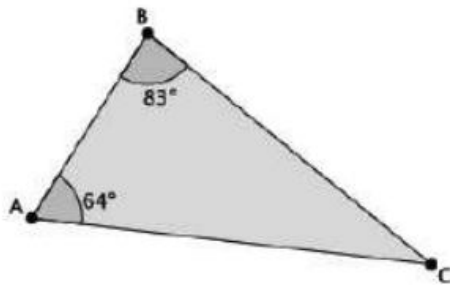


3. In the diagram below, line AB is parallel to line CD , i.e., $L_{AB} \parallel L_{CD}$. The measure of angle $\angle ABE = 56^\circ$, and the measure of angle $\angle EDC = 22^\circ$. Find the measure of angle $\angle BED$. Explain why you are correct by presenting an informal argument that uses the angle sum of a triangle. (Hint: Extend the segment BE so that it intersects line CD .)



4. What is the measure of $\angle ACB$?



5. What is the measure of $\angle EFD$?

